

\$769,900 - 435 Douglas Ridge Mews Se, Calgary

MLS® #A2262784

\$769,900

4 Bedroom, 4.00 Bathroom, 1,652 sqft
Residential on 0.13 Acres

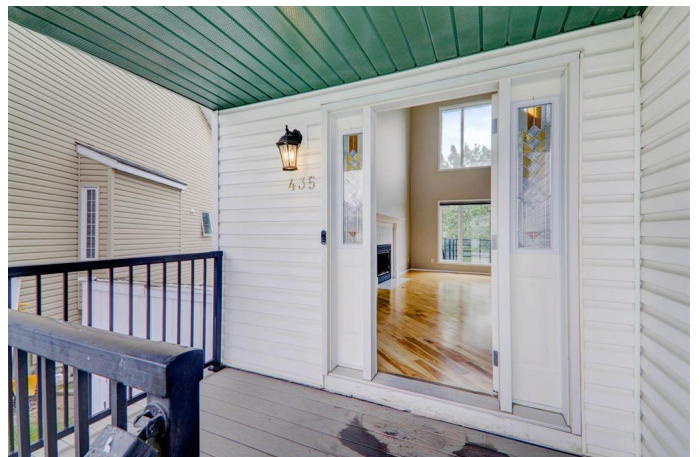
Douglasdale/Glen, Calgary, Alberta

Stunning Home with legal basement suite backing onto a green space and park on a cul-de-sac in Douglas dale. Walk into this nearly 1700 square-foot home with beautiful high ceilings and open concept on the main floor. The kitchen, dining and living area are all nicely combined perfect for entertaining and opens up onto a massive deck that overlooks a beautiful kids park and playground. Upstairs, you will find three bedrooms, including the master and four piece en suite. down in the basement with its own private entrance from the backyard is a legal suite that has just been completely renovated and not yet lived in. It hosts a big bedroom, four piece bathroom, full permitted Kitchen. Also a living room with a massive covered beautiful patio out the back to enjoy, again looking into the park. This home is only minutes away from the entrance onto Deerfoot and a plethora of shopping and essential stores on 130th Ave.

Built in 1994

Essential Information

MLS® #	A2262784
Price	\$769,900
Bedrooms	4
Bathrooms	4.00
Full Baths	3
Half Baths	1
Square Footage	1,652



Acres	0.13
Year Built	1994
Type	Residential
Sub-Type	Detached
Style	2 Storey
Status	Active

Community Information

Address	435 Douglas Ridge Mews Se
Subdivision	Douglasdale/Glen
City	Calgary
County	Calgary
Province	Alberta
Postal Code	T2Z 2M4

Amenities

Parking Spaces	4
Parking	Double Garage Attached
# of Garages	2

Interior

Interior Features	Closet Organizers, High Ceilings, No Smoking Home, Open Floorplan, Pantry, Separate Entrance
Appliances	Central Air Conditioner, Dishwasher, Electric Stove, Gas Stove, Microwave, Microwave Hood Fan, Range Hood, Refrigerator, Washer/Dryer, Washer/Dryer Stacked, Wall/Window Air Conditioner
Heating	Forced Air
Cooling	Central Air
Fireplace	Yes
# of Fireplaces	1
Fireplaces	Gas
Has Basement	Yes
Basement	Finished, Full, Walk-Out

Exterior

Exterior Features	Private Entrance, Rain Gutters
Lot Description	Back Yard, Backs on to Park/Green Space, Gentle Sloping, Landscaped, Pie Shaped Lot
Roof	Asphalt Shingle

Construction	Vinyl Siding, Wood Frame
Foundation	Poured Concrete

Additional Information

Date Listed	October 7th, 2025
Days on Market	12
Zoning	R-CG

Listing Details

Listing Office	RE/MAX Landan Real Estate
----------------	---------------------------

Data is supplied by Pillar 9â„¢ MLSÂ® System. Pillar 9â„¢ is the owner of the copyright in its MLSÂ® System. Data is deemed reliable but is not guaranteed accurate by Pillar 9â„¢. The trademarks MLSÂ®, Multiple Listing ServiceÂ® and the associated logos are owned by The Canadian Real Estate Association (CREA) and identify the quality of services provided by real estate professionals who are members of CREA. Used under license.