

# \$449,999 - 2040 11 Avenue Nw, Medicine Hat

MLS® #A2256094

**\$449,999**

0 Bedroom, 0.00 Bathroom,  
Commercial on 0.00 Acres

Brier Park Industrial, Medicine Hat, Alberta

Versatile shop space available in Brier Park Industrial area! Featuring two large overhead doors, a durable cement floor, and built-in drainage, this space is ideal for warehouse use. Located in a well-established industrial hub with easy access. Donâ€™t miss this practical, high-functioning space for your growing business or personal storage! Operating cost are \$3.50/sq ft

Built in 2006

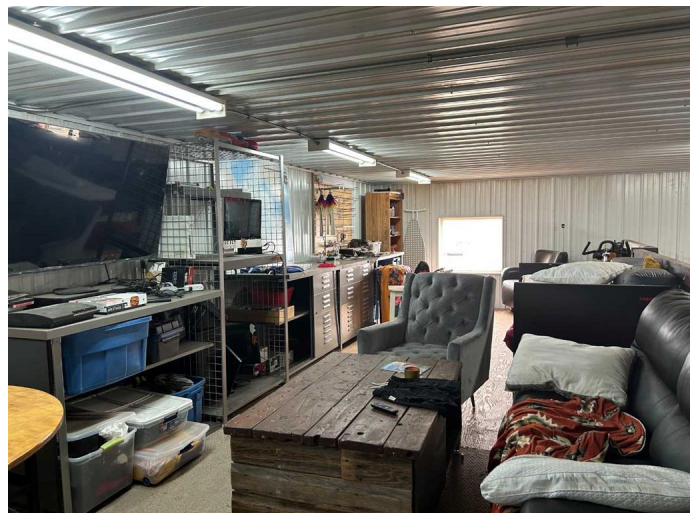
## Essential Information

MLS® #	A2256094
Price	\$449,999
Bathrooms	0.00
Acres	0.00
Year Built	2006
Type	Commercial
Sub-Type	Industrial
Status	Active

## Community Information

Address	2040 11 Avenue Nw
Subdivision	Brier Park Industrial
City	Medicine Hat
County	Medicine Hat
Province	Alberta
Postal Code	T1C1T6

## Additional Information



Date Listed	September 10th, 2025
Days on Market	5
Zoning	I-G

### **Listing Details**

Listing Office	RE/MAX MEDALTA REAL ESTATE
----------------	----------------------------

Data is supplied by Pillar 9â„¢ MLS® System. Pillar 9â„¢ is the owner of the copyright in its MLS® System. Data is deemed reliable but is not guaranteed accurate by Pillar 9â„¢. The trademarks MLS®, Multiple Listing Service® and the associated logos are owned by The Canadian Real Estate Association (CREA) and identify the quality of services provided by real estate professionals who are members of CREA. Used under license.