

# \$85,000 - 5108 2nd Street, Boyle

MLS® #A2255961

**\$85,000**

0 Bedroom, 0.00 Bathroom,  
Commercial on 0.00 Acres

Boyle, Boyle, Alberta

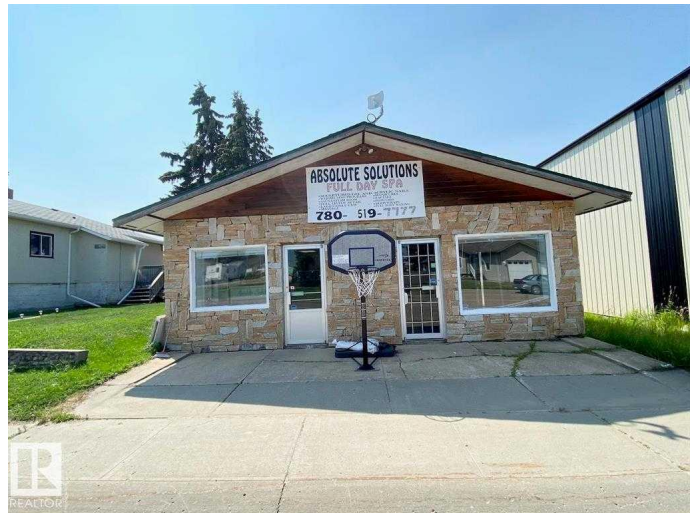
## COURT-ORDERED SALE - COMMERCIAL PROPERTY WITH EXCEPTIONAL POTENTIAL IN BOYLE!

Take advantage of this rare opportunity to own a versatile commercial building ideally located halfway between Fort McMurray and Edmonton. Situated in the welcoming community of Boyle, this property offers excellent visibility and affordability for entrepreneurs, investors, or business owners looking to establish or expand their footprint. Zoned for a variety of uses, the space is perfect for retail, office, or other commercial ventures. The building features multiple rooms and offices, along with a live-in residence complete with a full kitchen – ideal for owner-operators or staff accommodation. With recreational lakes and seasonal tourism nearby, this property offers year-round business potential catering to both the local population and summer visitors. Property is being sold as-is, where-is per schedule "A". Don't miss your chance to bring your vision to life in this growing community.

Built in 1945

## Essential Information

MLS® #	A2255961
Price	\$85,000
Bathrooms	0.00
Acres	0.00



Year Built	1945
Type	Commercial
Sub-Type	Mixed Use
Status	Active

### Community Information

Address	5108 2nd Street
Subdivision	Boyle
City	Boyle
County	Athabasca County
Province	Alberta
Postal Code	T0A 0M0

### Exterior

Roof	Asphalt Shingle
------	-----------------

### Additional Information

Date Listed	September 10th, 2025
Days on Market	6
Zoning	commercial

### Listing Details

Listing Office	RE/MAX LA BICHE REALTY
----------------	------------------------

Data is supplied by Pillar 9â„¢ MLS® System. Pillar 9â„¢ is the owner of the copyright in its MLS® System. Data is deemed reliable but is not guaranteed accurate by Pillar 9â„¢. The trademarks MLS®, Multiple Listing Service® and the associated logos are owned by The Canadian Real Estate Association (CREA) and identify the quality of services provided by real estate professionals who are members of CREA. Used under license.