

# \$479,900 - 402, 135 Belmont Passage Sw, Calgary

MLS® #A2247302

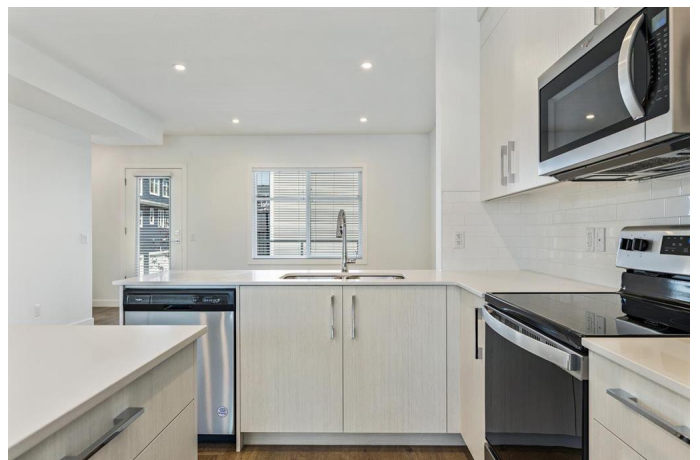
**\$479,900**

4 Bedroom, 3.00 Bathroom, 1,668 sqft

Residential on 0.00 Acres

Belmont, Calgary, Alberta

Discover Briarfield, an exclusive collection of 4-bedroom townhomes built by Truman in Calgary's flourishing southwest community of Belmont. Designed with both elegance and everyday living in mind, these homes offer a refined yet comfortable lifestyle in one of the city's fastest-growing neighbourhoods. Each home at Briarfield is thoughtfully crafted for modern families and professionals alike, featuring four spacious bedrooms and two-and-a-half bathrooms across an open-concept layout. The main floor includes a versatile fourth bedroom, perfect as a home office, guest room, or quiet retreat, offering flexibility to match your lifestyle. Inside, high ceilings and luxury vinyl plank flooring create a bright, airy atmosphere, while the contemporary kitchen impresses with full-height cabinetry, soft-close drawers, stainless steel appliances, quartz countertops, and an eat-up bar. A generous pantry adds extra storage, making this space as functional as it is stylish. Upstairs, the primary bedroom serves as a peaceful sanctuary, complete with a walk-in closet and a luxurious four-piece ensuite. Two additional bedrooms, a second full bathroom, and convenient upper-floor laundry provide comfort and practicality for the whole household. Briarfield homes also include a double attached heated garage, offering both convenience and protection from Calgary's ever-changing weather. Set in the heart of Belmont, residents are just moments from playgrounds, scenic pathways,



schools, shopping, dining, and major roadways. This is a connected, community-focused neighbourhood thatâ€™s ideal for growing families and those looking for more space without compromising on access to city amenities. Briarfield is move-in readyâ€”bringing together the best of modern living, thoughtful design, and trusted Truman craftsmanship. \*Photo Gallery of Similar Unit

Built in 2025

Essential Information

MLS® #	A2247302
Price	\$479,900
Bedrooms	4
Bathrooms	3.00
Full Baths	2
Half Baths	1
Square Footage	1,668
Acres	0.00
Year Built	2025
Type	Residential
Sub-Type	Row/Townhouse
Style	3 Storey
Status	Active

Community Information

Address	402, 135 Belmont Passage Sw
Subdivision	Belmont
City	Calgary
County	Calgary
Province	Alberta
Postal Code	T2X 4N4

Amenities

Amenities	Park, Visitor Parking
Parking Spaces	2
Parking	Double Garage Attached

# of Garages            2

### **Interior**

Interior Features    Breakfast Bar, Pantry, Quartz Counters  
Appliances           Dishwasher, Electric Range, Microwave Hood Fan, Refrigerator, Window Coverings  
Heating               Forced Air  
Cooling               None  
Basement             None

### **Exterior**

Exterior Features    Balcony  
Lot Description       Back Lane  
Roof                   Asphalt Shingle  
Construction         Vinyl Siding, Wood Frame  
Foundation           Poured Concrete

### **Additional Information**

Date Listed           August 8th, 2025  
Days on Market       38  
Zoning                 M-G

### **Listing Details**

Listing Office         RE/MAX First

Data is supplied by Pillar 9â„¢ MLSÂ® System. Pillar 9â„¢ is the owner of the copyright in its MLSÂ® System. Data is deemed reliable but is not guaranteed accurate by Pillar 9â„¢. The trademarks MLSÂ®, Multiple Listing ServiceÂ® and the associated logos are owned by The Canadian Real Estate Association (CREA) and identify the quality of services provided by real estate professionals who are members of CREA. Used under license.