

# \$127,000 - #107, 160 Moberly Road, Grande Cache

MLS® #A2245058

**\$127,000**

2 Bedroom, 2.00 Bathroom, 1,050 sqft

Residential on 0.00 Acres

NONE, Grande Cache, Alberta

Looking for convenient main floor condo living? This just might be right up your alley!

Welcome to Eagle Rock—this main level unit offers ease, comfort, and access to Grande Cache's beautiful trail system right outside your door. Enjoy two spacious bedrooms, including a primary with a walk-in closet and private 4-piece ensuite. The second bedroom is perfect for guests or an office, with a second full bath located just steps away.

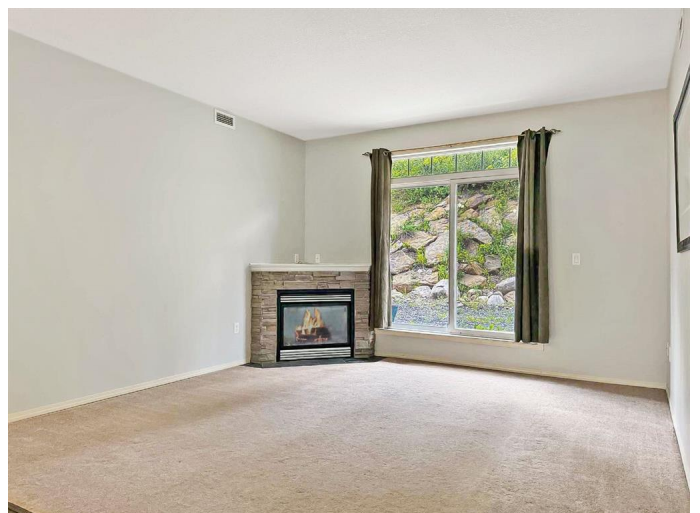
Inside, you'll find the perfect blend of vinyl plank and carpet flooring, a cozy gas fireplace in the living area, and the convenience of in-suite laundry. Step out your patio doors and enjoy your own little terrace—a perfect spot to sip your morning coffee and listen to the birds.

This unit includes TWO titled parking spots—one underground and one surface. Condo fees cover it all: heat, water, building insurance, property management, reserve fund contributions, snow removal, lawn care, and even the heated underground garage.

Whether you're looking to slow down, downsize, or simply enjoy the ease of condo life—this could be your perfect fit.

Built in 2007

## Essential Information



MLS® #	A2245058
Price	\$127,000
Bedrooms	2
Bathrooms	2.00
Full Baths	1
Half Baths	1
Square Footage	1,050
Acres	0.00
Year Built	2007
Type	Residential
Sub-Type	Apartment
Style	Single Level Unit
Status	Active

### Community Information

Address	#107, 160 Moberly Road
Subdivision	NONE
City	Grande Cache
County	Greenview No. 16, M.D. of
Province	Alberta
Postal Code	T0E0Y0

### Amenities

Amenities	None
Parking Spaces	2
Parking	Parkade

### Interior

Interior Features	See Remarks
Appliances	Dishwasher, Electric Stove, Microwave, Refrigerator, Washer/Dryer
Heating	Forced Air
Cooling	None
Fireplace	Yes
# of Fireplaces	1
Fireplaces	Gas
# of Stories	4

### Exterior

Exterior Features	Other
-------------------	-------

Construction            Wood Frame

**Additional Information**

Date Listed            August 1st, 2025  
Days on Market        1  
Zoning                  DC

**Listing Details**

Listing Office           Grassroots Realty Group Ltd.

Data is supplied by Pillar 9â„¢ MLS® System. Pillar 9â„¢ is the owner of the copyright in its MLS® System. Data is deemed reliable but is not guaranteed accurate by Pillar 9â„¢. The trademarks MLS®, Multiple Listing Service® and the associated logos are owned by The Canadian Real Estate Association (CREA) and identify the quality of services provided by real estate professionals who are members of CREA. Used under license.