

\$265,000 - 1120 43 Avenue N, Lethbridge

MLS® #A2244108

\$265,000

0 Bedroom, 0.00 Bathroom,
Land on 0.15 Acres

Legacy Ridge / Hardieville, Lethbridge, Alberta

Great building lot 1/2 block from park/playground. 1200 sq. ft shop 30 x 40 with 3 pc bathroom, heated, full electrical service, drain pit and 12 ft. ceiling. dream setup for a lot of different scenarios, Large building lot 40 x 160 with mature trees and mostly fenced.

Essential Information

MLS® #	A2244108
Price	\$265,000
Bathrooms	0.00
Acres	0.15
Type	Land
Sub-Type	Residential Land
Status	Active

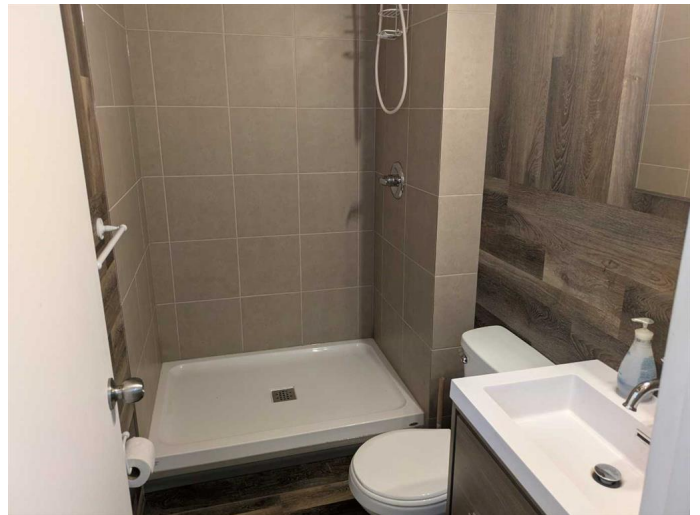
Community Information

Address	1120 43 Avenue N
Subdivision	Legacy Ridge / Hardieville
City	Lethbridge
County	Lethbridge
Province	Alberta
Postal Code	T1H 6C2

Exterior

Lot Description Back Lane, Back Yard, Treed

Additional Information



Date Listed	July 29th, 2025
Days on Market	1
Zoning	R-1

Listing Details

Listing Office	Royal Lepage South Country - Lethbridge
----------------	---

Data is supplied by Pillar 9â„¢ MLSÂ® System. Pillar 9â„¢ is the owner of the copyright in its MLSÂ® System. Data is deemed reliable but is not guaranteed accurate by Pillar 9â„¢. The trademarks MLSÂ®, Multiple Listing ServiceÂ® and the associated logos are owned by The Canadian Real Estate Association (CREA) and identify the quality of services provided by real estate professionals who are members of CREA. Used under license.