

# \$819,900 - 57226a Range Road 81, Rural Lac Ste. Anne County

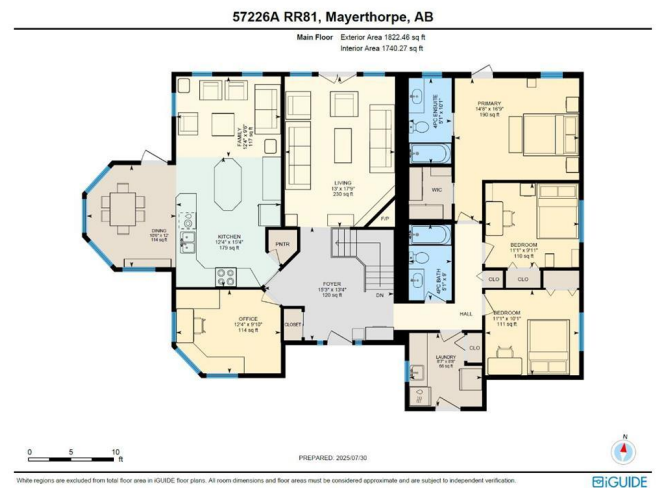
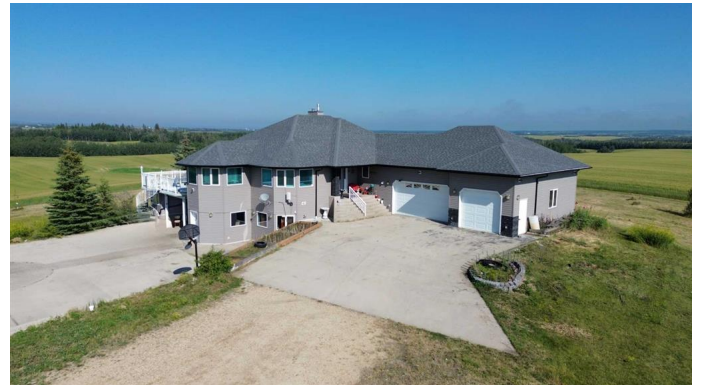
MLS® #A2243925

**\$819,900**

3 Bedroom, 2.00 Bathroom, 1,822 sqft  
Residential on 16.98 Acres

NONE, Rural Lac Ste. Anne County, Alberta

Peaceful Country Living with Serious Shop Space on 16.98 Acres! This 1996-built over 1,800 sq ft home offers the best of country living with room to grow, work, and unwind—all on a private 16.98-acre parcel. The spacious main floor features 3 bedrooms, including a primary suite with full ensuite, a second full bath, main floor laundry, and a bright living room with a cozy gas fireplace. Enjoy the extra space in the fully finished walk-out basement, perfect for a rec room, home gym, or extended family living. Need room for vehicles, tools, or your business? This property delivers with a triple attached garage plus two incredible shops! The first shop is a massive at 5,280 sq ft with one 16' x 14' overhead door and one 14' x 12' overhead door—ideal for large equipment. The second shop is 2,520 sq ft with a 14' x 12' overhead door and drive-through access, offering great versatility for trucks, trailers, or additional storage. With the shops currently generating over \$4,000 per month it is a great way to offset your mortgage payment. Outside, the nearly 17 acres give you space to live the lifestyle you want—whether it's hobby farming, running a home-based business, or just enjoying the peace and quiet of rural Alberta. This property is a rare find with usable land, a walk-out basement, heated shop space, and a family-ready home all in one!



Built in 1996

## Essential Information

MLS® #	A2243925
Price	\$819,900
Bedrooms	3
Bathrooms	2.00
Full Baths	2
Square Footage	1,822
Acres	16.98
Year Built	1996
Type	Residential
Sub-Type	Detached
Style	Acreage with Residence, Bungalow
Status	Active

## Community Information

Address	57226a Range Road 81
Subdivision	NONE
City	Rural Lac Ste. Anne County
County	Lac Ste. Anne County
Province	Alberta
Postal Code	T0E 1N0

## Amenities

Parking	Triple Garage Attached
# of Garages	3

## Interior

Interior Features	Bar, Ceiling Fan(s), Central Vacuum, Kitchen Island, Vinyl Windows
Appliances	Dishwasher, Freezer, Oven, Range Hood, Refrigerator, Washer/Dryer, Window Coverings
Heating	Forced Air
Cooling	None
Fireplace	Yes
# of Fireplaces	1
Fireplaces	Gas
Has Basement	Yes
Basement	Finished, Full, Walk-Out

**Exterior**

Exterior Features	Fire Pit, Lighting, Private Yard
Lot Description	Back Lane, Back Yard, Few Trees, Front Yard, Low Maintenance Landscape, Private, Cleared, Irregular Lot
Roof	Asphalt Shingle
Construction	Stone, Vinyl Siding
Foundation	Poured Concrete

**Additional Information**

Date Listed	July 29th, 2025
Days on Market	2
Zoning	Country Residential Ranch

**Listing Details**

Listing Office	RE/MAX ADVANTAGE (WHITECOURT)
----------------	-------------------------------

Data is supplied by Pillar 9â„¸ MLSÂ® System. Pillar 9â„¸ is the owner of the copyright in its MLSÂ® System. Data is deemed reliable but is not guaranteed accurate by Pillar 9â„¸. The trademarks MLSÂ®, Multiple Listing ServiceÂ® and the associated logos are owned by The Canadian Real Estate Association (CREA) and identify the quality of services provided by real estate professionals who are members of CREA. Used under license.