

\$86,000 - 230, 38850 Range Road 25a, Rural Red Deer County

MLS® #A2243887

\$86,000

2 Bedroom, 1.00 Bathroom, 14,435 sqft
Mobile on 0.00 Acres

Kountry Meadows, Rural Red Deer County,
Alberta

Welcome to this affordable and updated 2-bedroom mobile home with a spacious addition – just a 10-minute drive from Sylvan Lake! This charming home sits on a private lot with two sheds, trees and a fully usable yard perfect for relaxing or entertaining.

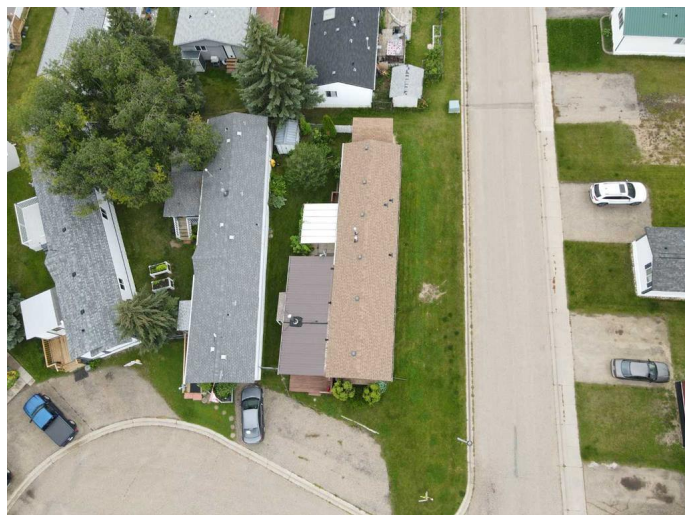
Inside, youâ€™ll find two living rooms (one could easily be converted into a third bedroom), a large entrance area with a coat closet, updated flooring, a wood-burning stove, and a kitchen with plenty of cupboard space and an L-shaped island. The home also features natural light throughout, ceiling fans, and a combined bath/laundry room with extra storage. Updates throughout make it move-in ready and functional.

Step outside to enjoy raspberry bushes, mature trees, and front and back decks (just 2 years old). A true hidden gem for anyone looking for peace, privacy, and value close to the lake.

Built in 1978

Essential Information

MLS® #	A2243887
Price	\$86,000
Bedrooms	2



Bathrooms	1.00
Full Baths	1
Square Footage	14,435
Acres	0.00
Year Built	1978
Type	Mobile
Sub-Type	Mobile
Style	Single Wide Mobile Home
Status	Active

Community Information

Address	230, 38850 Range Road 25a
Subdivision	Kountry Meadows
City	Rural Red Deer County
County	Red Deer County
Province	Alberta
Postal Code	T0M0H0

Amenities

Parking Spaces	3
Parking	Driveway, Off Street, Parking Pad, Paved

Interior

Interior Features	Built-in Features, Ceiling Fan(s), Closet Organizers, Open Floorplan
Appliances	Dishwasher, Refrigerator, Stove(s), Washer/Dryer, Window Coverings
Heating	Forced Air, Wood Stove

Exterior

Exterior Features	Private Yard
Roof	Asphalt Shingle, Metal
Construction	Vinyl Siding
Foundation	None

Additional Information

Date Listed	July 28th, 2025
Days on Market	3

Listing Details

Listing Office	KIC Realty
----------------	------------

Data is supplied by Pillar 9â„¢ MLS® System. Pillar 9â„¢ is the owner of the copyright in its MLS® System. Data is deemed reliable but is not guaranteed accurate by Pillar 9â„¢. The trademarks MLS®, Multiple Listing Service® and the associated logos are owned by The Canadian Real Estate Association (CREA) and identify the quality of services provided by real estate professionals who are members of CREA. Used under license.