

# \$368,000 - 16338 Township Road 675, Plamondon

MLS® #A2243868

**\$368,000**

2 Bedroom, 3.00 Bathroom, 1,419 sqft  
Residential on 2.59 Acres

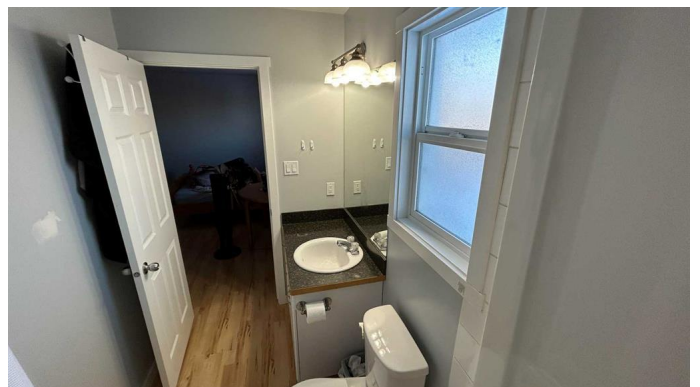
Plamondon, Plamondon, Alberta

Nestled near Plamondon and close to Lac La Biche, this charming bungalow-style home offers serene living with a walk-out basement and breathtaking views of pastures in the valley below. The heated detached garage provides ample warm storage for two vehicles and outdoor toys. With an open-plan three-bedroom layout, there is plenty of opportunity for family gatherings or entertaining friends. A wrap-around deck offers ample of sunny spots all through the warmer months and the half finished basement is perfect for additional living space or a potential secondary suite. This is an outdoor enthusiast's dream, offering easy access to skidooning, snowshoeing, fishing, and abundant wildlife in a quiet neighborhood. If you feel it is time to escape to the country this property ticks all the boxes.

Built in 2010

## Essential Information

MLS® #	A2243868
Price	\$368,000
Bedrooms	2
Bathrooms	3.00
Full Baths	3
Square Footage	1,419



Acres	2.59
Year Built	2010
Type	Residential
Sub-Type	Detached
Style	1 and Half Storey, Acreage with Residence
Status	Active

### **Community Information**

Address	16338 Township Road 675
Subdivision	Plamondon
City	Plamondon
County	Lac La Biche County
Province	Alberta
Postal Code	T0A 2T0

### **Amenities**

Utilities	Electricity Paid For, Heating Paid For
Parking Spaces	6
Parking	Double Garage Detached
# of Garages	2

### **Interior**

Interior Features	High Ceilings, Kitchen Island, Laminate Counters, Open Floorplan, Tankless Hot Water, Vaulted Ceiling(s), Walk-In Closet(s)
Appliances	Dishwasher, Dryer, Refrigerator, Washer
Heating	Forced Air, Natural Gas
Cooling	None
Has Basement	Yes
Basement	Full, Partially Finished

### **Exterior**

Exterior Features	Fire Pit
Lot Description	Back Yard, Many Trees, Views, Cleared, Gentle Sloping, Meadow
Roof	Asphalt Shingle
Construction	Wood Frame
Foundation	Poured Concrete

### **Additional Information**

Date Listed	July 28th, 2025
-------------	-----------------

Days on Market 3  
Zoning CR

### **Listing Details**

Listing Office RE/MAX EXCELLENCE

Data is supplied by Pillar 9â„¸ MLSÂ® System. Pillar 9â„¸ is the owner of the copyright in its MLSÂ® System. Data is deemed reliable but is not guaranteed accurate by Pillar 9â„¸. The trademarks MLSÂ®, Multiple Listing ServiceÂ® and the associated logos are owned by The Canadian Real Estate Association (CREA) and identify the quality of services provided by real estate professionals who are members of CREA. Used under license.