

\$85,000 - Part Of Nw-4-67-22-4 Highway 813, Rural Athabasca County

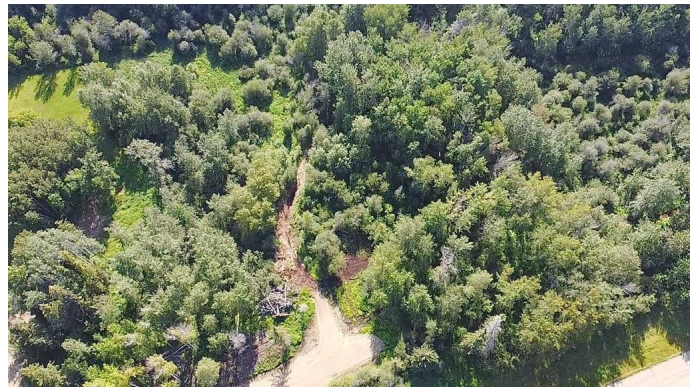
MLS® #A2243824

\$85,000

0 Bedroom, 0.00 Bathroom,
Land on 10.38 Acres

NONE, Rural Athabasca County, Alberta

10.38 acres only a couple minutes from town limits, perfect size for either recreational use or your future home. Mostly bush with a scenic walking trail. Desirable location will get you close access to the Athabasca river, golf course, and thousands of acres of crown land with a healthy population of elk, deer and moose. No restrictive covenants. GST applicable.



Essential Information

MLS® #	A2243824
Price	\$85,000
Bathrooms	0.00
Acres	10.38
Type	Land
Sub-Type	Residential Land
Status	Active

Community Information

Address	Part Of Nw-4-67-22-4 Highway 813
Subdivision	NONE
City	Rural Athabasca County
County	Athabasca County
Province	Alberta
Postal Code	T9S 2A6

Additional Information

Date Listed	July 28th, 2025
Days on Market	2
Zoning	AG

Listing Details

Listing Office	3% REALTY PROGRESS
----------------	--------------------

Data is supplied by Pillar 9â„¢ MLS® System. Pillar 9â„¢ is the owner of the copyright in its MLS® System. Data is deemed reliable but is not guaranteed accurate by Pillar 9â„¢. The trademarks MLS®, Multiple Listing Service® and the associated logos are owned by The Canadian Real Estate Association (CREA) and identify the quality of services provided by real estate professionals who are members of CREA. Used under license.