

\$825,000 - 6924, Roper Road, Edmonton

MLS® #A2243499

\$825,000

0 Bedroom, 0.00 Bathroom,
Commercial on 0.00 Acres

Roper Industrial, Edmonton, Alberta

Prime commercial space available in South East Edmonton's "Bridge Water Business Park," ideally located on Roper Road between 75 St and 50 St, with easy access to Whitemud Freeway, public transit, and backing onto the scenic Mill Creek Ravine. This versatile property is zoned for multiple uses, including childcare, offices, schools, retail, and more. It features two floors with separate washrooms and kitchen areas on each level, ample parking, and excellent visibility—perfect for establishing or expanding your business in a highly accessible and desirable location.

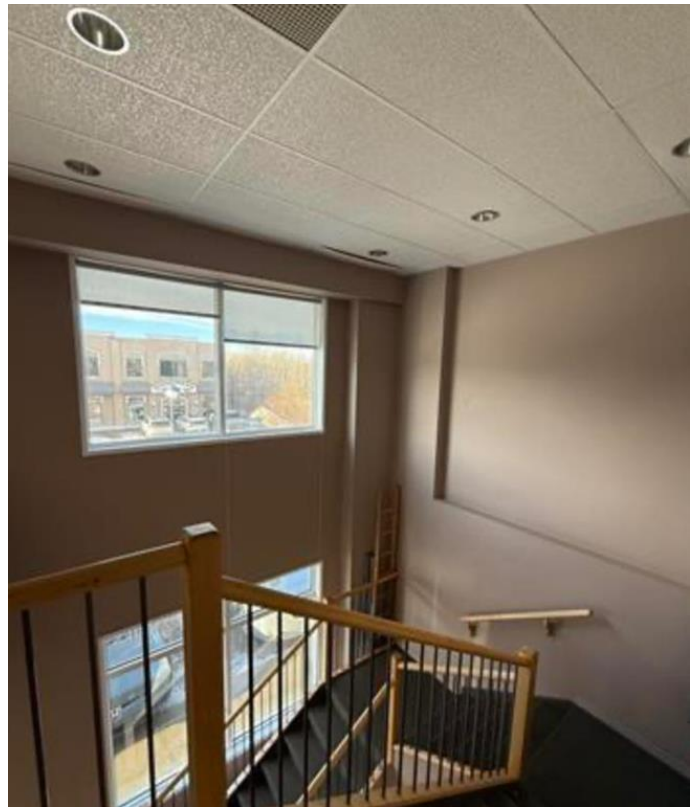
Built in 2001

Essential Information

| | |
|------------|------------|
| MLS® # | A2243499 |
| Price | \$825,000 |
| Bathrooms | 0.00 |
| Acres | 0.00 |
| Year Built | 2001 |
| Type | Commercial |
| Sub-Type | Office |
| Status | Active |

Community Information

| | |
|-------------|------------------|
| Address | 6924, Roper Road |
| Subdivision | Roper Industrial |
| City | Edmonton |



| | |
|-------------|----------|
| County | Edmonton |
| Province | Alberta |
| Postal Code | T6B 3H9 |

Additional Information

| | |
|----------------|-----------------|
| Date Listed | July 26th, 2025 |
| Days on Market | 5 |
| Zoning | BE |

Listing Details

| | |
|----------------|--------------------|
| Listing Office | Initia Real Estate |
|----------------|--------------------|

Data is supplied by Pillar 9â„¢ MLS® System. Pillar 9â„¢ is the owner of the copyright in its MLS® System. Data is deemed reliable but is not guaranteed accurate by Pillar 9â„¢. The trademarks MLS®, Multiple Listing Service® and the associated logos are owned by The Canadian Real Estate Association (CREA) and identify the quality of services provided by real estate professionals who are members of CREA. Used under license.