

# \$9 - 2213, 2211 2 Avenue N, Lethbridge

MLS® #A2243264

**\$9**

0 Bedroom, 0.00 Bathroom,  
Commercial on 0.77 Acres

Anderson Industrial Park, Lethbridge, Alberta

An approximately 4,900 sf industrial space and 500 sf office space available for lease. With a corner profile and prominent signage along 2nd Avenue North and the corner of 22nd Street North, this site is great for an industrial service or building supply. Currently zoned for automotive use, the flexible property could cater to a wide variety of users.

Built in 1958

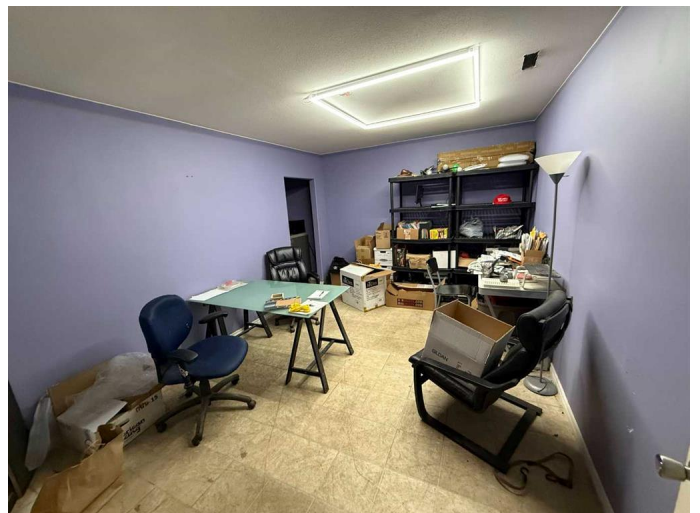
## Essential Information

MLS® #	A2243264
Price	\$9
Bathrooms	0.00
Acres	0.77
Year Built	1958
Type	Commercial
Sub-Type	Industrial
Status	Active

## Community Information

Address	2213, 2211 2 Avenue N
Subdivision	Anderson Industrial Park
City	Lethbridge
County	Lethbridge
Province	Alberta
Postal Code	T1H 0C1

## Additional Information



Date Listed	July 25th, 2025
Days on Market	2
Zoning	I-G

### **Listing Details**

Listing Office	AVISON YOUNG
----------------	--------------

Data is supplied by Pillar 9â„¢ MLSÂ® System. Pillar 9â„¢ is the owner of the copyright in its MLSÂ® System. Data is deemed reliable but is not guaranteed accurate by Pillar 9â„¢. The trademarks MLSÂ®, Multiple Listing ServiceÂ® and the associated logos are owned by The Canadian Real Estate Association (CREA) and identify the quality of services provided by real estate professionals who are members of CREA. Used under license.