

\$44,900 - 18 Railway Avenue E, St. Walburg

MLS® #A2227836

\$44,900

1 Bedroom, 1.00 Bathroom, 694 sqft

Residential on 0.09 Acres

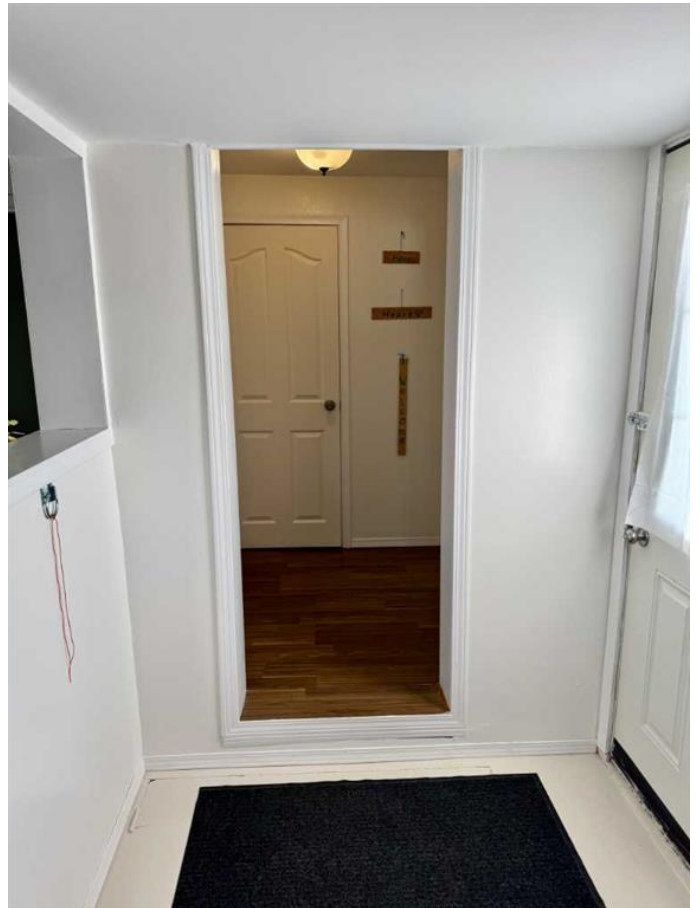
NONE, St. Walburg, Saskatchewan

Located in the vibrant and welcoming community of St. Walburgâ€™celebrated for its lively festivals and strong local spiritâ€™this charming 1-bedroom, 1-bathroom home is full of potential. With recent updates including newer windows, shingles, and siding, itâ€™s move-in ready with room to make it your own. Set on an extra-long lot just steps from downtown, youâ€™ll enjoy convenient access to shops, restaurants, and community amenities. Whether you're a first-time buyer, investor, or handy individual looking for a rewarding project, this property offers a wonderful opportunity to create a cozy haven or generate rental income in a thriving small town.

Built in 1959

Essential Information

MLS® #	A2227836
Price	\$44,900
Bedrooms	1
Bathrooms	1.00
Full Baths	1
Square Footage	694
Acres	0.09
Year Built	1959
Type	Residential
Sub-Type	Detached
Style	Bungalow



Status	Active
--------	--------

Community Information

Address	18 Railway Avenue E
Subdivision	NONE
City	St. Walburg
County	Saskatchewan
Province	Saskatchewan
Postal Code	S0M2T0

Amenities

Parking Spaces	2
Parking	None

Interior

Interior Features	See Remarks
Appliances	Dishwasher, Dryer, Refrigerator, Stove(s)
Heating	Forced Air
Cooling	None
Basement	None

Exterior

Exterior Features	None
Lot Description	Front Yard, Lawn
Roof	Asphalt Shingle
Construction	Vinyl Siding
Foundation	Poured Concrete

Additional Information

Date Listed	June 6th, 2025
Days on Market	63
Zoning	R1

Listing Details

Listing Office	LPT Realty
----------------	------------

Data is supplied by Pillar 9â„¢ MLS® System. Pillar 9â„¢ is the owner of the copyright in its MLS® System. Data is deemed reliable but is not guaranteed accurate by Pillar 9â„¢. The trademarks MLS®, Multiple Listing Service® and the associated logos are owned by The Canadian Real Estate Association (CREA) and identify the quality of services provided by real estate professionals who are members of CREA. Used under license.