

\$319,900 - 7021 112 Street, Grande Prairie

MLS® #A2227049

\$319,900

3 Bedroom, 2.00 Bathroom, 1,193 sqft
Residential on 0.07 Acres

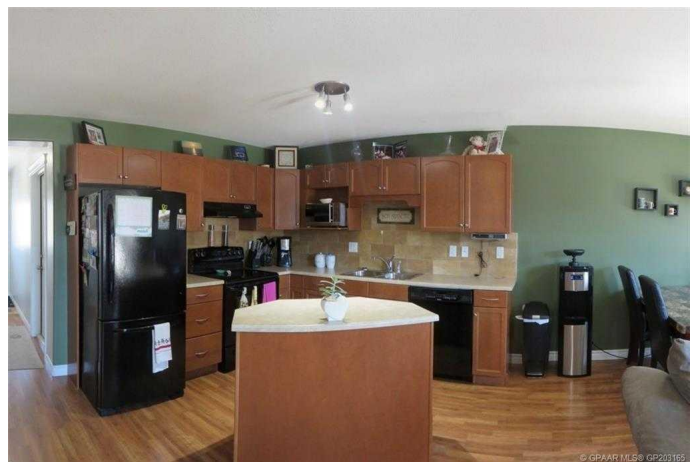
Pinnacle Ridge., Grande Prairie, Alberta

This 3 bedroom 2 story half duplex has all you could want for a lucrative rental or family home featuring upstairs Laundry, fenced yard, Natural gas Fireplace and a kitchen Island. The main floor boast a half bath adjacent to the great room combining the Living room, Kitchen and dinning area. East facing glass sliding door provides lots of light and leads to the back deck and private fenced well maintained yard yard. The basement is undeveloped and ready for your personal touch. Call your Realtor to book a viewing appointment today.

Built in 2007

Essential Information

MLS® #	A2227049
Price	\$319,900
Bedrooms	3
Bathrooms	2.00
Full Baths	1
Half Baths	1
Square Footage	1,193
Acres	0.07
Year Built	2007
Type	Residential
Sub-Type	Semi Detached
Style	2 Storey, Side by Side
Status	Active



Community Information

Address	7021 112 Street
Subdivision	Pinnacle Ridge.
City	Grande Prairie
County	Grande Prairie
Province	Alberta
Postal Code	T8W 0C8

Amenities

Parking Spaces	2
Parking	Parking Pad, Single Garage Attached
# of Garages	1

Interior

Interior Features	Kitchen Island, Storage, Sump Pump(s)
Appliances	Dishwasher, Oven, Refrigerator, Washer/Dryer
Heating	Forced Air
Cooling	None
Fireplace	Yes
# of Fireplaces	1
Fireplaces	Gas
Has Basement	Yes
Basement	Full, Unfinished

Exterior

Exterior Features	Private Yard
Lot Description	Front Yard, Landscaped, Lawn
Roof	Asphalt Shingle
Construction	Concrete, Vinyl Siding, Wood Frame
Foundation	Poured Concrete

Additional Information

Date Listed	June 2nd, 2025
Days on Market	18
Zoning	R

Listing Details

Listing Office	Tom Shields Realty Inc.
----------------	-------------------------

Data is supplied by Pillar 9â„¢ MLS® System. Pillar 9â„¢ is the owner of the copyright in its MLS® System. Data is

deemed reliable but is not guaranteed accurate by Pillar 9â„¸. The trademarks MLSÂ®, Multiple Listing ServiceÂ® and the associated logos are owned by The Canadian Real Estate Association (CREA) and identify the quality of services provided by real estate professionals who are members of CREA. Used under license.