

# \$420,000 - 14 Garden Way, Drumheller

MLS® #A2224806

## \$420,000

2 Bedroom, 3.00 Bathroom, 1,104 sqft  
Residential on 0.08 Acres

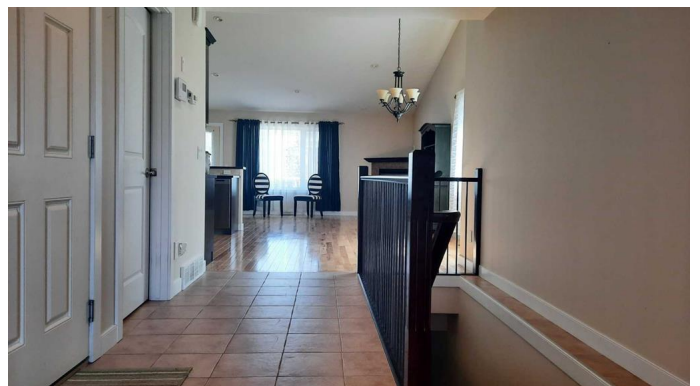
Riverview Park, Drumheller, Alberta

55+ Living at its Finest ! Located in the desirable community of Riverside Gardens. This home offers an attached garage, large entry with closet, Open concept living with room for large dining table, corner pantry, corner gas fireplace and balcony. Primary bedroom features a 4pc ensuite, and walk in closet. Main floor laundry and powder room. Downstairs a large family room, Flex den for Craft/Quilt Studio/Home office a 4pc guest bathroom and 2nd bedroom. There is good storage and access to patio and back yard. Heated floors in basement, Central Air Conditioning and NO Condo Fees ! \$150 landscaping fee. With window coverings included and priced you can put your own cosmetic touches on. Don't Miss out !

Built in 2011

## Essential Information

MLS® #	A2224806
Price	\$420,000
Bedrooms	2
Bathrooms	3.00
Full Baths	2
Half Baths	1
Square Footage	1,104
Acres	0.08
Year Built	2011
Type	Residential



Sub-Type	Row/Townhouse
Style	Townhouse
Status	Active

### Community Information

Address	14 Garden Way
Subdivision	Riverview Park
City	Drumheller
County	Drumheller
Province	Alberta
Postal Code	T0J 0Y5

### Amenities

Amenities	Park, Visitor Parking
Parking Spaces	1
Parking	Single Garage Attached
# of Garages	1

### Interior

Interior Features	No Animal Home, Open Floorplan
Appliances	Dishwasher, Electric Stove, Microwave, Washer/Dryer, Window Coverings
Heating	In Floor, Forced Air, Natural Gas
Cooling	Central Air
Fireplace	Yes
# of Fireplaces	1
Fireplaces	Gas
Has Basement	Yes
Basement	Finished, Full

### Exterior

Exterior Features	Balcony
Lot Description	Few Trees, Gentle Sloping, Landscaped
Roof	Asphalt Shingle
Construction	Vinyl Siding
Foundation	Poured Concrete

### Additional Information

Date Listed	May 25th, 2025
-------------	----------------

Days on Market 71  
Zoning ND

### **Listing Details**

Listing Office RE/MAX Now

Data is supplied by Pillar 9â,,ç MLSÂ® System. Pillar 9â,,ç is the owner of the copyright in its MLSÂ® System. Data is deemed reliable but is not guaranteed accurate by Pillar 9â,,ç. The trademarks MLSÂ®, Multiple Listing ServiceÂ® and the associated logos are owned by The Canadian Real Estate Association (CREA) and identify the quality of services provided by real estate professionals who are members of CREA. Used under license.