

\$375,000 - 415 Jenkins Drive, Red Deer

MLS® #A2224044

\$375,000

2 Bedroom, 2.00 Bathroom, 822 sqft

Residential on 0.06 Acres

Johnstone Park, Red Deer, Alberta

Adult living for downsizing situations, quiet street and green space behind, smaller single car garage with welcoming clubhouse and low fees. Two bedrooms and a den 2 full baths and basement entrance to green space. Very functional space for mobility challenged.

Built in 2003

Essential Information

MLS® #	A2224044
Price	\$375,000
Bedrooms	2
Bathrooms	2.00
Full Baths	2
Square Footage	822
Acres	0.06
Year Built	2003
Type	Residential
Sub-Type	Row/Townhouse
Style	Townhouse
Status	Active

Community Information

Address	415 Jenkins Drive
Subdivision	Johnstone Park
City	Red Deer
County	Red Deer
Province	Alberta
Postal Code	T4P 3X1



Amenities

Amenities	Clubhouse
Utilities	Electricity Connected, Natural Gas Connected, Sewer Connected, Water Connected, Water Collection
Parking Spaces	1
Parking	Driveway, Single Garage Attached
# of Garages	1

Interior

Interior Features	Vinyl Windows
Appliances	Dishwasher, Garage Control
Heating	Forced Air, Natural Gas
Cooling	None
Fireplace	Yes
# of Fireplaces	1
Fireplaces	Gas, Living Room, Stone
Has Basement	Yes
Basement	Exterior Entry, Full

Exterior

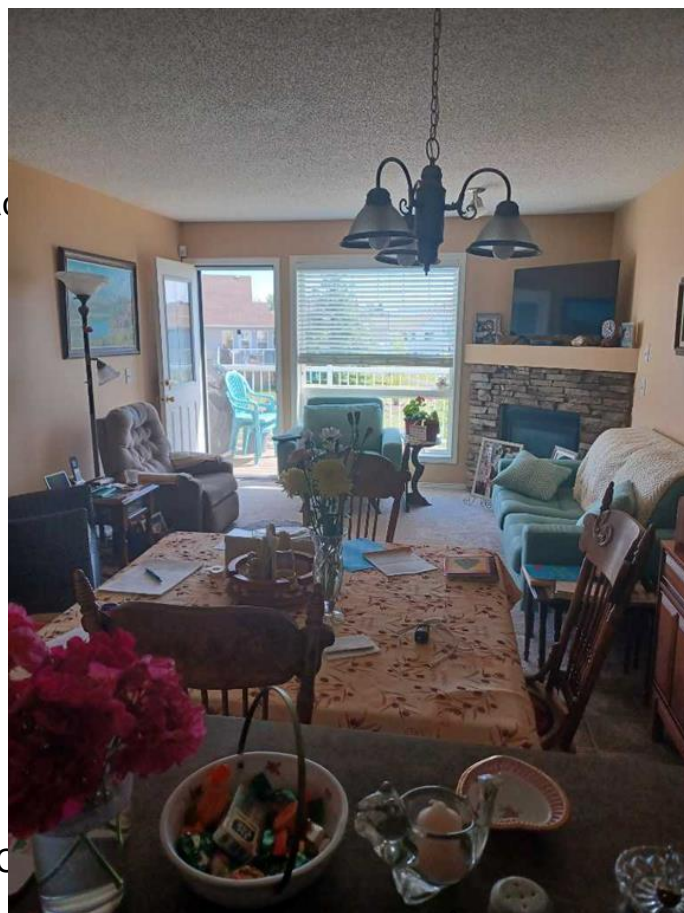
Exterior Features	Balcony
Lot Description	Backs on to Park/Green Space
Roof	Asphalt Shingle
Construction	Vinyl Siding
Foundation	Poured Concrete

Additional Information

Date Listed	May 25th, 2025
Days on Market	15
Zoning	R3
HOA Fees	310
HOA Fees Freq.	MON

Listing Details

Listing Office	Royal LePage Network Realty Co.
----------------	---------------------------------



Data is supplied by Pillar 9â„¢ MLSÂ® System. Pillar 9â„¢ is the owner of the copyright in its MLSA® System. Data is deemed reliable but is not guaranteed accurate by Pillar 9â„¢. The trademarks MLSÂ®, Multiple Listing ServiceÂ® and the associated logos are owned by The Canadian Real Estate Association (CREA) and identify the quality of services provided by real estate professionals who are members of CREA. Used under license.