

\$525,000 - 33 White Avenue, Red Deer

MLS® #A2223398

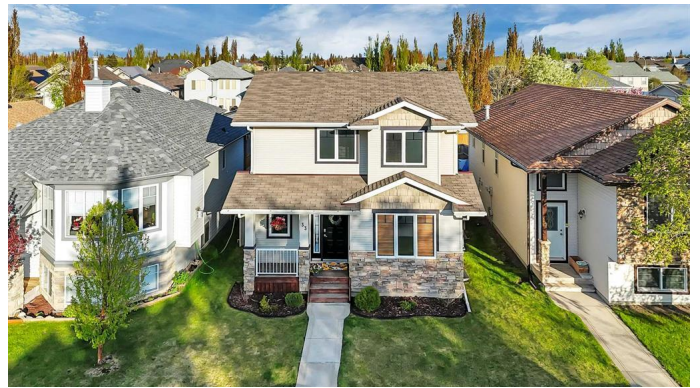
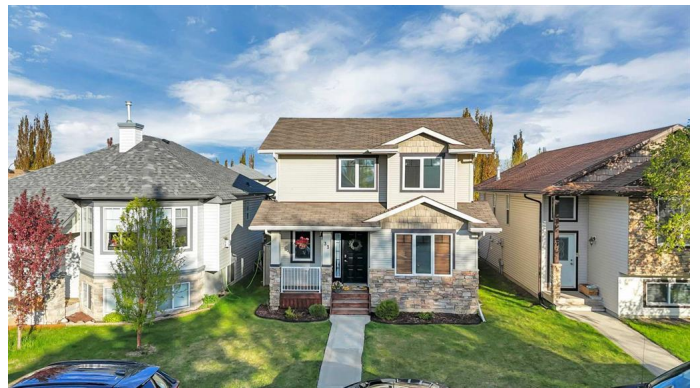
\$525,000

4 Bedroom, 3.00 Bathroom, 1,600 sqft

Residential on 0.09 Acres

Westlake, Red Deer, Alberta

When extraordinary leads to... WOW... This uniquely designed 1 1/2 Storey home features soaring vaulted ceilings, which feature 2 dormer style south facing ceiling windows which bathe the main floor in natural light. The Focus of the Main Floor, and favorite of Family & Friends will be the large bright Great Room. Built by Executive Homes, all the finishes, from trim to alder cabinets to lighting, are all of superior quality. The kitchen has a corner pantry, ample cabinets with pot drawers & a large island with an eating bar. Dishwasher is 1 year old and Stove is new. The Dining Area has Garden Doors that lead to a Full, House width, Covered private Deck with a gas outlet for your BBQ. Living room features a gas Fireplace with a mantle & TV space above. There are 2 bedrooms on the main floor and a full 4-piece bath. Off the front door, conveniently located, is the Laundry room. The stairs leading to the Primary suite naturally capture your attention with Maple Railings and Spindles. They lead to a Foyer and then up to the Loft/Home Office area. The Primary Suite is designed for comfort and privacy. A massive room, it has large walk-in closet and a 3-pc ensuite. Moving to the finished basement, a full steel beam was installed to create a huge multi purpose Family room. There is a wet bar, stone feature walls, accent lighting. An electric fireplace for aesthetics and the perfect place for your big screen TV. 4th bedroom is being used as an exercise room and there is a storage room. The 3-pc bathroom has a



custom body wash shower. Carpets on the main floor, stairs and on upstairs are new. RR under floor in basement. The garage is the largest allowed on this lot. Fully custom, it has a concrete sub-wall & 10'6" ceilings. The full 8' garage door has a silent side opener which has an automatic dead bolt lock. There is 220 wiring, a wall built-in exhaust fan and Chrome Checkered Plating around the perimeter, except where your work bench will go. The Built-in Shelving will stay. This property is designed for living and has Central Air. The small backyard is fully maintenance free. Located in a quiet family area, walking distance to Heritage Ranch and our Walking/Bike trails and the Red Deer Polytechnic.

Built in 2004

Essential Information

MLS® #	A2223398
Price	\$525,000
Bedrooms	4
Bathrooms	3.00
Full Baths	3
Square Footage	1,600
Acres	0.09
Year Built	2004
Type	Residential
Sub-Type	Detached
Style	1 and Half Storey
Status	Active

Community Information

Address	33 White Avenue
Subdivision	Westlake
City	Red Deer
County	Red Deer
Province	Alberta

Postal Code T4N 7E5

Amenities

Parking Spaces 2

Parking Double Garage Detached, Garage Door Opener, Heated Garage, See Remarks, 220 Volt Wiring, Concrete Driveway

of Garages 2

Interior

Interior Features Built-in Features, Ceiling Fan(s), Central Vacuum, High Ceilings, Kitchen Island, No Smoking Home, Pantry, Vinyl Windows, Wet Bar

Appliances Dishwasher, Refrigerator, Stove(s), Washer/Dryer, Window Coverings

Heating Forced Air, In Floor Roughed-In

Cooling Central Air

Fireplace Yes

of Fireplaces 2

Fireplaces Electric, Family Room, Gas, Living Room

Has Basement Yes

Basement Finished, Full

Exterior

Exterior Features BBQ gas line, Private Yard

Lot Description Back Lane, See Remarks

Roof Asphalt Shingle

Construction Wood Frame

Foundation Poured Concrete

Additional Information

Date Listed May 20th, 2025

Days on Market 52

Zoning R1N

Listing Details

Listing Office RE/MAX real estate central alberta

Data is supplied by Pillar 9â„¢ MLS® System. Pillar 9â„¢ is the owner of the copyright in its MLS® System. Data is deemed reliable but is not guaranteed accurate by Pillar 9â„¢. The trademarks MLS®, Multiple Listing Service® and the associated logos are owned by The Canadian Real Estate Association (CREA) and identify the quality of services provided by real estate professionals who are members of CREA. Used under license.