

\$714,900 - 93 Saddletree Close Ne, Calgary

MLS® #A2221283

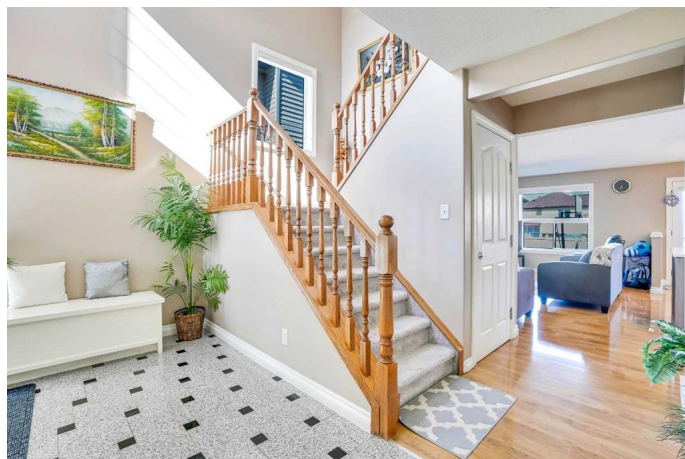
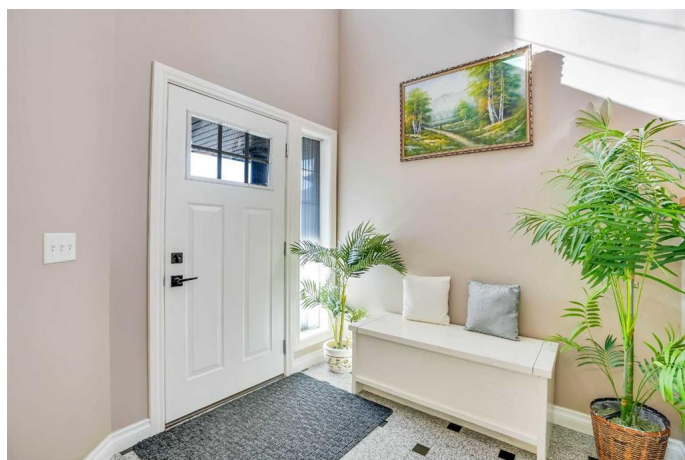
\$714,900

4 Bedroom, 4.00 Bathroom, 1,822 sqft

Residential on 0.08 Acres

Saddle Ridge, Calgary, Alberta

This spacious and thoughtfully designed two-storey home in Saddle Ridge is the kind of place where your family can truly settle in and grow. With 4 bedrooms (including a LEGAL 1-BED LOWER SUITE), 3.5 bathrooms, and an upper bonus room, there's room for everyone – and then some. Whether you're looking for space to spread out, host holiday dinners, or simply enjoy quiet evenings by the fireplace, this one checks all the boxes. The main floor offers a warm, welcoming layout with a stunning open to above foyer with custom marble tile that leads you into the main living area that has been tastefully UPDATED and centers around a functional UPDATED kitchen with stunning tile, loads of counter space, a central island, and upgraded MODERN cabinetry with QUARTZ counters. The adjacent (but open-feeling) dining space is filled with natural light and provides access to the large back deck finished with maintenance free COMPOSITE DECKING and sunny spacious backyard! The living room is centred around a cozy fireplace with updated tiles that sets the tone for movie nights or Sunday morning coffee. Upstairs, you'll find newer plush carpet, a large, sunny bonus room and three generously sized bedrooms, including a large primary suite with a 4-piece ensuite with a soaking tub, updated lighting & plumbing fixtures, and glass shower, and a main 4-pc bathroom that has also been updated. Downstairs, the fully finished LEGAL 1-BED basement suite includes a good-sized



living room, a kitchen with full-height cabinetry and a full-sized fridge, a spacious bedroom, and a private 4-pc full bath with built-in storageâ€”perfect for extended family or a mortgage helper. The layout is super practical for a growing or multigenerational family. Youâ€™ll also love the DOUBLE ATTACHED GARAGE and extra-wide front driveway with plenty of space for guests or a busy household with multiple vehicles. Located on a quiet, established street, this home is just minutes from everything families need. You're WALKING DISTANCE to multiple schools, including Saddle Ridge School (Kâ€“4), Peter Lougheed School (5â€“9), and Light of Christ School (Kâ€“9). Older kids can walk or take a quick bus to Nelson Mandela High School (10â€“12), located just down the road. There are also nearby green spaces and playgrounds, plus youâ€™re only a 4-minute drive to the Saddle Ridge Circle shopping plaza for groceries, restaurants, coffee, and services. Easy access to transit, Stoney Trail, and the airport makes commuting a breeze. Plus, the nearby Genesis Centre offers fitness classes, turf fields, and skating â€” perfect for keeping active year-round. The lot is spacious and rectangular, giving you a great backyard setup for summer BBQs, a playset, or even a future garden. Whether you're upsizing, relocating, or planting long-term roots, this is a house with real potential to become your home. Solid bones, a smart layout, and a location that delivers real day-to-day value. If you're on the hunt for a home that grows with you, this could be it!

Built in 2006

Essential Information

MLS® #	A2221283
Price	\$714,900
Bedrooms	4

Bathrooms	4.00
Full Baths	3
Half Baths	1
Square Footage	1,822
Acres	0.08
Year Built	2006
Type	Residential
Sub-Type	Detached
Style	2 Storey
Status	Active

Community Information

Address	93 Saddletree Close Ne
Subdivision	Saddle Ridge
City	Calgary
County	Calgary
Province	Alberta
Postal Code	T3J 5J1

Amenities

Parking Spaces	2
Parking	Double Garage Attached, Alley Access, Asphalt
# of Garages	2

Interior

Interior Features	Closet Organizers, High Ceilings, Kitchen Island, No Animal Home, No Smoking Home, Pantry, Quartz Counters, Soaking Tub, Walk-In Closet(s), Separate Entrance
Appliances	Dishwasher, Dryer, Microwave, Range Hood, Refrigerator, Washer, Electric Stove
Heating	Forced Air
Cooling	None
Fireplace	Yes
# of Fireplaces	1
Fireplaces	Gas
Has Basement	Yes
Basement	Finished, Full, Suite

Exterior

Exterior Features	Private Entrance, Private Yard
Lot Description	Back Yard, Low Maintenance Landscape, Rectangular Lot
Roof	Asphalt Shingle
Construction	Stucco
Foundation	Poured Concrete

Additional Information

Date Listed	May 20th, 2025
Days on Market	73
Zoning	R-G

Listing Details

Listing Office	RE/MAX House of Real Estate
----------------	-----------------------------

Data is supplied by Pillar 9â„¢ MLS® System. Pillar 9â„¢ is the owner of the copyright in its MLS® System. Data is deemed reliable but is not guaranteed accurate by Pillar 9â„¢. The trademarks MLS®, Multiple Listing Service® and the associated logos are owned by The Canadian Real Estate Association (CREA) and identify the quality of services provided by real estate professionals who are members of CREA. Used under license.