

# \$250,000 - 92 Dalhousie Court W, Lethbridge

MLS® #A2220655

**\$250,000**

3 Bedroom, 1.00 Bathroom, 993 sqft

Residential on 0.11 Acres

Varsity Village, Lethbridge, Alberta

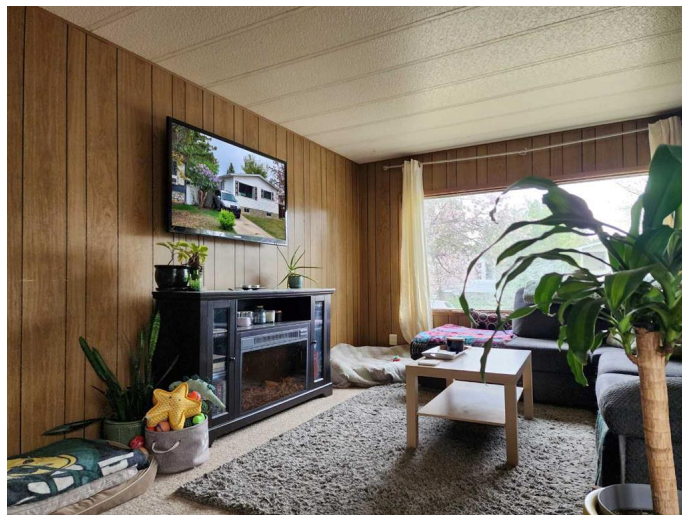
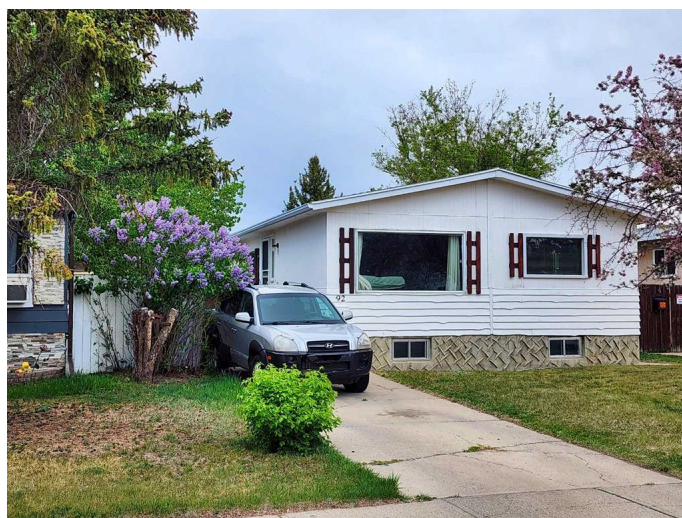
Welcome to this charming 3-bedroom, 1-bathroom, affordable home located in the heart of Varsity Village! Perfectly positioned close to the University, this home features warm wood paneling throughout and a kitchen equipped with beautiful wood cabinetry. The main floor hosts three bedrooms and a conveniently located 4-piece bathroom. The home has a full undeveloped basement, offering ample storage space and potential for future customization. Outside, you'll find a driveway with parking for two vehicles at the front of the house and plenty of curb appeal with mature flowering trees and perennials. The large, fully fenced backyard provides privacy and includes convenient gate access to a nearby playground park, just steps away! This home is ideally situated within walking distance to the University of Lethbridge and the community stadium. Additionally, it's in close proximity to Nicholas Sheran Park and a variety of other green spaces to explore. With all amenities, transit options, and more nearby, this bungalow offers the perfect blend of comfort and convenience. Don't miss the opportunity to make this space your own.

Built in 1975

## Essential Information

MLS® # A2220655

Price \$250,000



Bedrooms	3
Bathrooms	1.00
Full Baths	1
Square Footage	993
Acres	0.11
Year Built	1975
Type	Residential
Sub-Type	Detached
Style	Bungalow
Status	Active

### Community Information

Address	92 Dalhousie Court W
Subdivision	Varsity Village
City	Lethbridge
County	Lethbridge
Province	Alberta
Postal Code	T1K 4C9

### Amenities

Parking Spaces	2
Parking	Driveway, Off Street

### Interior

Interior Features	Storage
Appliances	See Remarks
Heating	Forced Air
Cooling	None
Has Basement	Yes
Basement	Full, Unfinished

### Exterior

Exterior Features	Storage
Lot Description	Backs on to Park/Green Space, Interior Lot
Roof	Asphalt Shingle
Construction	Mixed, Wood Frame, Wood Siding
Foundation	Poured Concrete

### Additional Information

Date Listed	May 14th, 2025
Days on Market	13
Zoning	R-L

### **Listing Details**

Listing Office	RE/MAX REAL ESTATE - LETHBRIDGE
----------------	---------------------------------

Data is supplied by Pillar 9â„¢ MLSÂ® System. Pillar 9â„¢ is the owner of the copyright in its MLSÂ® System. Data is deemed reliable but is not guaranteed accurate by Pillar 9â„¢. The trademarks MLSÂ®, Multiple Listing ServiceÂ® and the associated logos are owned by The Canadian Real Estate Association (CREA) and identify the quality of services provided by real estate professionals who are members of CREA. Used under license.