

\$925,000 - 1725 28 Street Sw, Calgary

MLS® #A2219047

\$925,000

3 Bedroom, 2.00 Bathroom, 1,074 sqft
Residential on 0.14 Acres

Shaganappi, Calgary, Alberta

ATTENTION DEVELOPERS and BUILDERS!!!
THIS LOT IS BEING SOLD TOGETHER WITH
ADJACENT LOT AT 1727 28 STREET SW.
BOTH MUST BE PURCHASED TOGETHER.
TOTAL LOT SIZE OF 24.38 METRES WIDE x
45.76 METRES DEEP. Located in the heart
of Shaganappi with phenomenal walkability
and access to downtown makes this a prime
location for development.

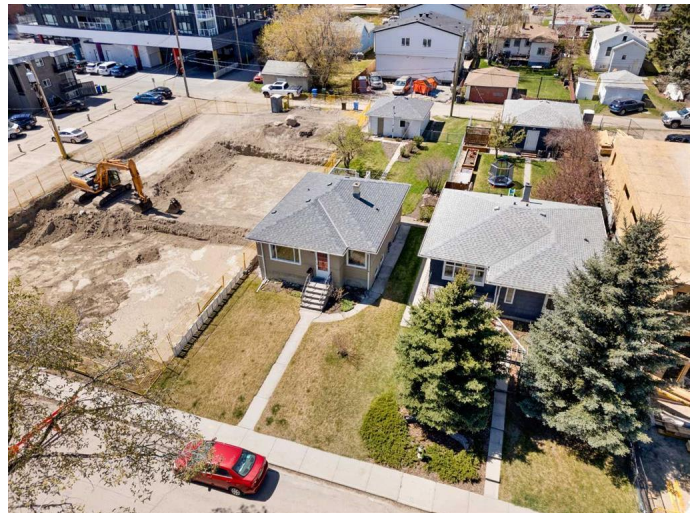
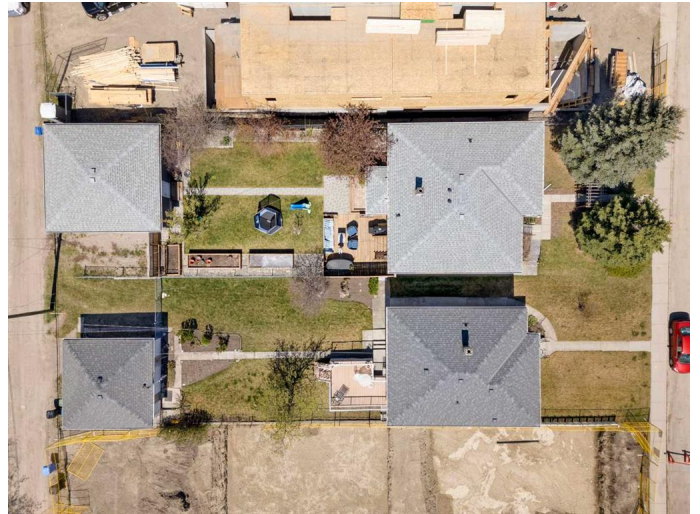
Built in 1949

Essential Information

MLS® #	A2219047
Price	\$925,000
Bedrooms	3
Bathrooms	2.00
Full Baths	2
Square Footage	1,074
Acres	0.14
Year Built	1949
Type	Residential
Sub-Type	Detached
Style	Bungalow
Status	Active

Community Information

Address	1725 28 Street Sw
Subdivision	Shaganappi
City	Calgary



County	Calgary
Province	Alberta
Postal Code	T3C 1M1

Amenities

Parking Spaces	4
Parking	Double Garage Detached
# of Garages	2

Interior

Interior Features	No Smoking Home, Quartz Counters, Recessed Lighting, Tankless Hot Water, Vinyl Windows, Wet Bar
Appliances	None
Heating	High Efficiency, In Floor, Forced Air, Geothermal
Cooling	Central Air
Fireplace	Yes
# of Fireplaces	1
Fireplaces	Gas, Living Room
Has Basement	Yes
Basement	Finished, Full

Exterior

Exterior Features	Private Yard
Lot Description	Back Lane, Back Yard, Front Yard, Landscaped, Lawn, Private, Rectangular Lot, Treed
Roof	Asphalt Shingle
Construction	Composite Siding, Concrete, Wood Frame, Wood Siding
Foundation	Poured Concrete

Additional Information

Date Listed	May 7th, 2025
Days on Market	2
Zoning	R-CG

Listing Details

Listing Office	Charles
----------------	---------

Data is supplied by Pillar 9â„¢ MLS® System. Pillar 9â„¢ is the owner of the copyright in its MLS® System. Data is deemed reliable but is not guaranteed accurate by Pillar 9â„¢. The trademarks MLS®, Multiple Listing Service® and the associated logos are owned by The Canadian Real Estate Association (CREA) and identify the quality of services provided by real estate professionals who are members of CREA. Used under license.