

\$800,000 - 50 Bridlerange Circle Sw, Calgary

MLS® #A2218694

\$800,000

4 Bedroom, 4.00 Bathroom, 2,224 sqft

Residential on 0.10 Acres

Bridlewood, Calgary, Alberta

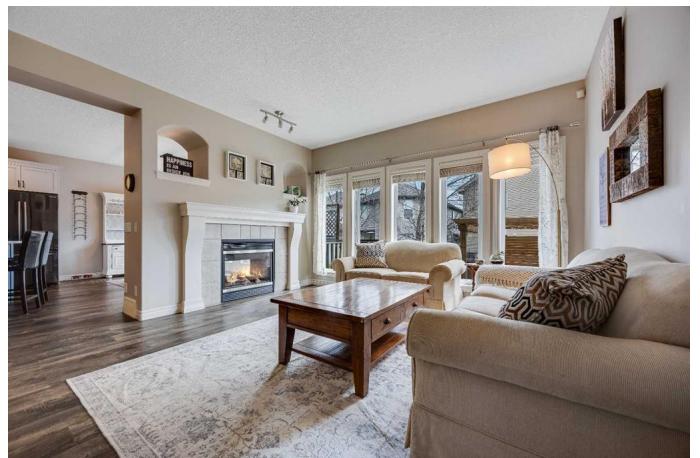
Beautifully Upgraded 4-Bedroom Home with Over 2,800 Sq.Ft. of Finished Living Space!

Welcome to this stunning, move-in ready home that's designed for family living and entertaining alike! Step inside to find a beautifully styled main floor featuring a striking double-sided fireplace, a spacious kitchen with a massive island, and a walk-through pantry—perfect for prepping meals and hosting gatherings. The open-concept dining area flows seamlessly into the backyard, where you'll find a private deck with a pergola and privacy screen—ready for a hot tub or your favorite summer loungers.

Upstairs, a thoughtfully designed bonus room provides separation between the spacious primary suite and the kids' bedrooms. The primary retreat includes a luxurious walk-in shower, relaxing soaker tub, large walk-in closet, and enough space for a king-size bed plus a cozy reading nook. The kids bedrooms are oversized, offering plenty of space to grow, play and personalize.

The fully finished basement offers a comfortable guest bedroom, full bathroom, and a versatile rec room—ideal for playtime, movie nights, or cheering on your favorite team.

Recent upgrades include newer shingles, siding, hot water tank, plank flooring and fresh



carpet upstairs. Located within walking distance to three schools, and just minutes from Ring Road, Bridlewood shops, and Shawnessy Station, this home truly has it all!

Built in 2006

Essential Information

| | |
|----------------|-------------|
| MLS® # | A2218694 |
| Price | \$800,000 |
| Bedrooms | 4 |
| Bathrooms | 4.00 |
| Full Baths | 3 |
| Half Baths | 1 |
| Square Footage | 2,224 |
| Acres | 0.10 |
| Year Built | 2006 |
| Type | Residential |
| Sub-Type | Detached |
| Style | 2 Storey |
| Status | Active |

Community Information

| | |
|-------------|--------------------------|
| Address | 50 Bridlerange Circle Sw |
| Subdivision | Bridlewood |
| City | Calgary |
| County | Calgary |
| Province | Alberta |
| Postal Code | T2Y 5H7 |

Amenities

| | |
|----------------|-----------------------------------|
| Parking Spaces | 2 |
| Parking | Double Garage Attached, Oversized |
| # of Garages | 2 |

Interior

| | |
|-------------------|--|
| Interior Features | Kitchen Island, Low Flow Plumbing Fixtures, No Smoking Home, Storage, Vinyl Windows, Walk-In Closet(s) |
| Appliances | Dishwasher, Dryer, Microwave, Range Hood, Refrigerator, Stove(s), |

| | |
|-----------------|-------------------------------|
| | Washer, Window Coverings |
| Heating | Forced Air, Natural Gas |
| Cooling | None |
| Fireplace | Yes |
| # of Fireplaces | 1 |
| Fireplaces | Double Sided, Gas, Great Room |
| Has Basement | Yes |
| Basement | Finished, Full |

Exterior

| | |
|-------------------|--|
| Exterior Features | Private Yard, Rain Gutters |
| Lot Description | Back Yard, Cul-De-Sac, Front Yard, Landscaped, Lawn, Level, Low Maintenance Landscape, Private, Underground Sprinklers |
| Roof | Asphalt Shingle |
| Construction | Vinyl Siding |
| Foundation | Poured Concrete |

Additional Information

| | |
|----------------|---------------|
| Date Listed | May 8th, 2025 |
| Days on Market | 4 |
| Zoning | R-G |

Listing Details

| | |
|----------------|------------|
| Listing Office | CIR Realty |
|----------------|------------|

Data is supplied by Pillar 9â„¢ MLS® System. Pillar 9â„¢ is the owner of the copyright in its MLS® System. Data is deemed reliable but is not guaranteed accurate by Pillar 9â„¢. The trademarks MLS®, Multiple Listing Service® and the associated logos are owned by The Canadian Real Estate Association (CREA) and identify the quality of services provided by real estate professionals who are members of CREA. Used under license.