

\$3,100,000 - 9440 112 Street, Grande Prairie

MLS® #A2214670

\$3,100,000

0 Bedroom, 0.00 Bathroom,
Commercial on 2.11 Acres

Richmond Industrial Park, Grande Prairie,
Alberta

Functional shop facility with 2 points of access/egress & drive around capabilities. Located in Richmond Industrial District in close proximity to Grande Prairie Airport with excellent access to Highway 40, Highway 43, and Highway 2. The property consists of 2 cranes, 6 grade doors, 20" clear ceiling height, wash bay, double compartment sump, make up air, air-conditioned office and a fenced yard compound.

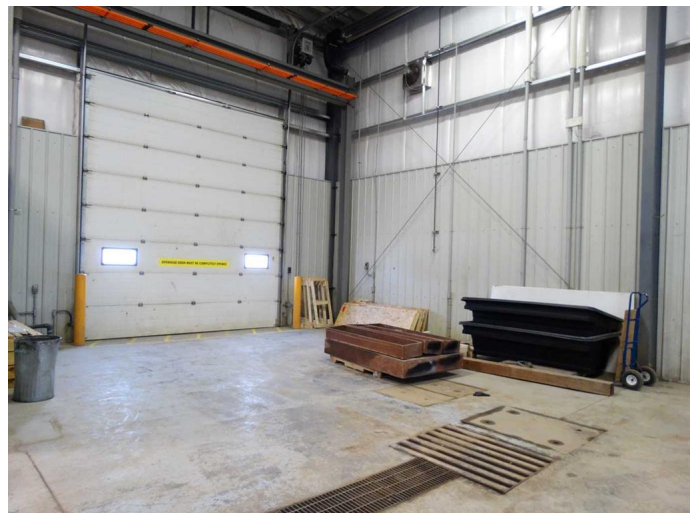
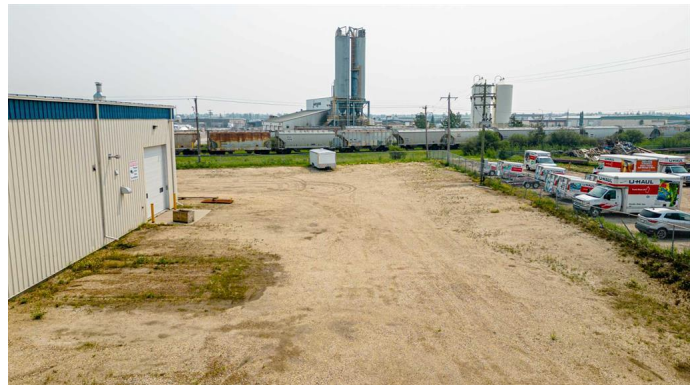
Built in 1998

Essential Information

MLS® #	A2214670
Price	\$3,100,000
Bathrooms	0.00
Acres	2.11
Year Built	1998
Type	Commercial
Sub-Type	Industrial
Status	Active

Community Information

Address	9440 112 Street
Subdivision	Richmond Industrial Park
City	Grande Prairie
County	Grande Prairie
Province	Alberta
Postal Code	T8V 5C1



Additional Information

Date Listed	May 5th, 2025
Days on Market	135
Zoning	IG

Listing Details

Listing Office	Honestdoor Inc.
----------------	-----------------

Data is supplied by Pillar 9â„¸ MLSÂ® System. Pillar 9â„¸ is the owner of the copyright in its MLSÂ® System. Data is deemed reliable but is not guaranteed accurate by Pillar 9â„¸. The trademarks MLSÂ®, Multiple Listing ServiceÂ® and the associated logos are owned by The Canadian Real Estate Association (CREA) and identify the quality of services provided by real estate professionals who are members of CREA. Used under license.