

\$1,090,000 - 1360 Shawnee Road Sw, Calgary

MLS® #A2214312

\$1,090,000

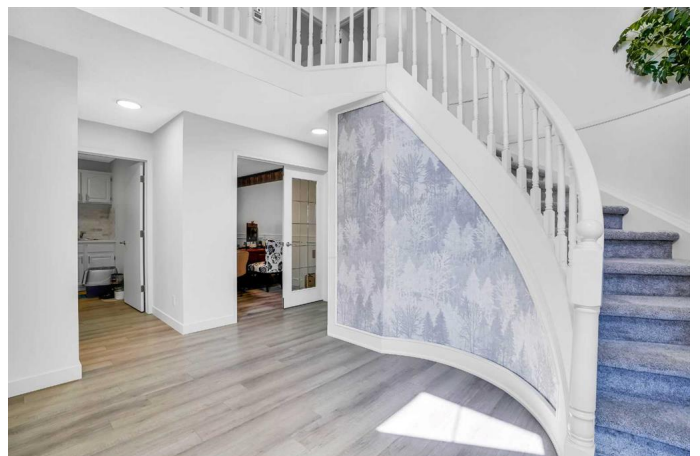
5 Bedroom, 4.00 Bathroom, 2,659 sqft
Residential on 0.13 Acres

Shawnee Slopes, Calgary, Alberta

Welcome to a home filled with love, laughter, and memories. The owners cared for this home with so much heart, raising their family here and even running a daycare, filling every room with happiness and life. Now, it is ready for your family to create the next beautiful chapter.

With over 4,000 square feet of bright, open space, there is room for everyone to live, grow, and make memories together. Picture your family gathered in the sun-filled kitchen, sharing meals in the spacious dining room, cozying up by the fireplace, or enjoying movie nights and game days in the walkout basement. Built for lasting protection, this home features a durable clay tile roof known for its exceptional longevity, fire resistance, and ability to withstand harsh weather. The solid stucco exterior adds even more strength and curb appeal. A spacious double garage offers the perfect setup for any hardworking homeowner to store tools, work on projects, and stay organized.

Step outside and imagine weekends spent exploring the endless beauty of Fish Creek Provincial Park, just minutes away, perfect for biking, walking, or simply soaking up nature. The community of Shawnee Slopes offers more than just stunning scenery. You will love the easy access to parks, schools, churches, playgrounds, the library and YMCA, and tons of shops and restaurants at Shawnessy Shopping Centre. Plus, with the nearby Fish Creek-Lacombe C-Train Station and quick



routes to Macleod Trail, getting around the city is simple and stress-free.

Shawnee Slopes is a place where neighbors feel like family, thanks to the active community association hosting fun events year-round.

This home is not just about space. It is about a lifestyle where modern comfort and natural beauty come together for your family to enjoy every single day.

Do not miss out on making this special place yours. Call today!

Built in 1989

Essential Information

MLS® #	A2214312
Price	\$1,090,000
Bedrooms	5
Bathrooms	4.00
Full Baths	3
Half Baths	1
Square Footage	2,659
Acres	0.13
Year Built	1989
Type	Residential
Sub-Type	Detached
Style	2 Storey
Status	Active

Community Information

Address	1360 Shawnee Road Sw
Subdivision	Shawnee Slopes
City	Calgary
County	Calgary
Province	Alberta
Postal Code	T2Y 2T1

Amenities

Parking Spaces	4
Parking	Double Garage Attached, Driveway

of Garages 2

Interior

Interior Features Bar, Bookcases, Built-in Features, Ceiling Fan(s), Central Vacuum, Closet Organizers, Double Vanity, High Ceilings, Natural Woodwork, No Smoking Home, Quartz Counters, Soaking Tub, Storage, Vaulted Ceiling(s), Chandelier, Wet Bar

Appliances Dishwasher, Dryer, Garage Control(s), Gas Range, Refrigerator, Washer, Water Softener

Heating In Floor, Fireplace(s), Forced Air, Natural Gas, Radiant, Wood

Cooling Central Air

Fireplace Yes

of Fireplaces 2

Fireplaces Gas, Wood Burning

Has Basement Yes

Basement Exterior Entry, Finished, Full, Walk-Out

Exterior

Exterior Features Balcony, BBQ gas line, Private Entrance, Private Yard

Lot Description Back Yard, Backs on to Park/Green Space, Cul-De-Sac, Landscaped, Private, Views

Roof Clay Tile

Construction Stucco, Wood Frame

Foundation Poured Concrete

Additional Information

Date Listed April 27th, 2025

Days on Market 2

Zoning R-CG

Listing Details

Listing Office eXp Realty

Data is supplied by Pillar 9â„¢ MLSÂ® System. Pillar 9â„¢ is the owner of the copyright in its MLSÂ® System. Data is deemed reliable but is not guaranteed accurate by Pillar 9â„¢. The trademarks MLSÂ®, Multiple Listing ServiceÂ® and the associated logos are owned by The Canadian Real Estate Association (CREA) and identify the quality of services provided by real estate professionals who are members of CREA. Used under license.