

\$648,000 - 46 Elmont Close Sw, Calgary

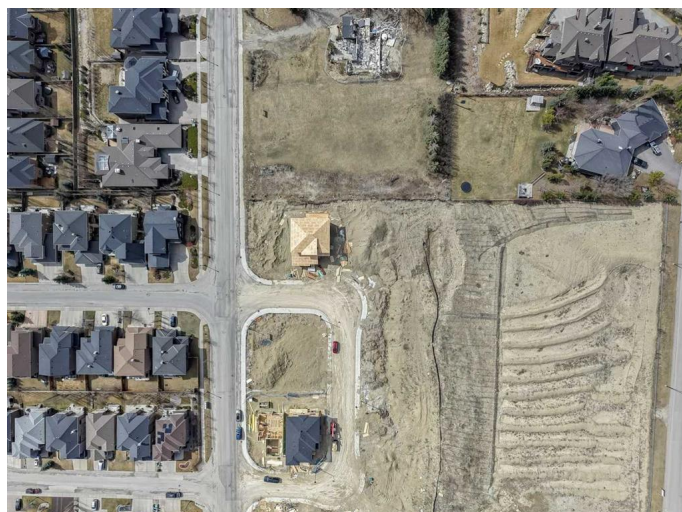
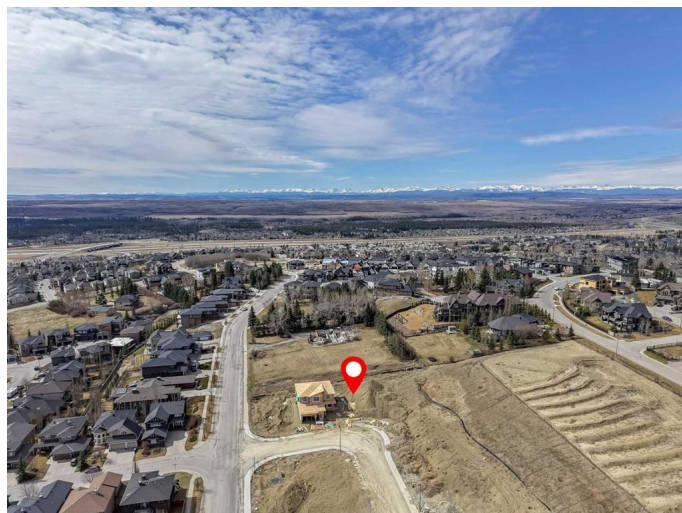
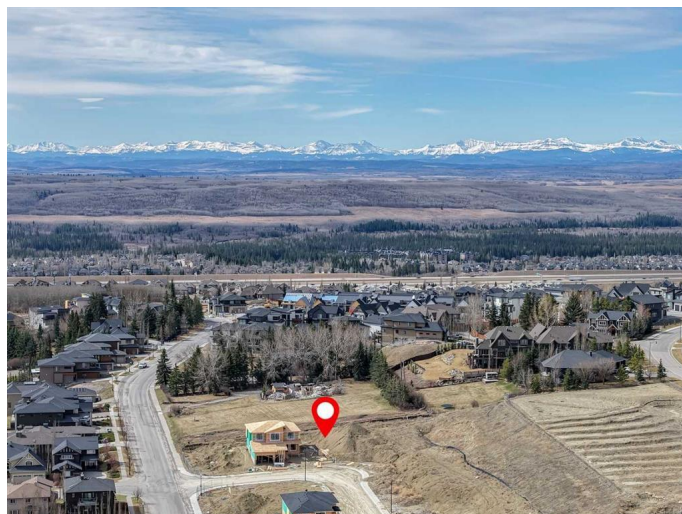
MLS® #A2212902

\$648,000

0 Bedroom, 0.00 Bathroom,
Land on 0.14 Acres

Springbank Hill, Calgary, Alberta

Build Your Dream Home in Prestigious Springbank Hill. Discover an incredible opportunity to craft the lifestyle youâ€™ve always imagined on this vacant lot in the highly sought-after community of Springbank Hill. Nestled among multi-million dollar homes, this spacious 6,264 sq ft lot features a sunny South-West-facing backyard, offering the perfect setting for your custom-built dream home. With no time commitment to build and the flexibility to bring your own builder, youâ€™re free to create a residence thatâ€™s perfectly tailored to your vision. Enjoy the best of Calgary living with access to top-tier amenities including: Aspen Landing Shopping Centre, Westside Recreation Centre, easy LRT access and the new West Ring Road, Premier private schools such as Webber Academy, Rundle College, and Calgary Academy. Located in a community known for its elegance, tranquility, and limited lot availability, this is more than just landâ€”it's an opportunity to join an exceptional neighborhood where your dream home can truly take shape. Don't miss out on this rare offeringâ€”secure your piece of Springbank Hill today!



Essential Information

MLS® #	A2212902
Price	\$648,000

Bathrooms	0.00
Acres	0.14
Type	Land
Sub-Type	Residential Land
Status	Active

Community Information

Address	46 Elmont Close Sw
Subdivision	Springbank Hill
City	Calgary
County	Calgary
Province	Alberta
Postal Code	T3H 6A6

Additional Information

Date Listed	April 21st, 2025
Days on Market	110
Zoning	R-G

Listing Details

Listing Office	Real Broker
----------------	-------------

Data is supplied by Pillar 9â„¢ MLS® System. Pillar 9â„¢ is the owner of the copyright in its MLS® System. Data is deemed reliable but is not guaranteed accurate by Pillar 9â„¢. The trademarks MLS®, Multiple Listing Service® and the associated logos are owned by The Canadian Real Estate Association (CREA) and identify the quality of services provided by real estate professionals who are members of CREA. Used under license.