

# \$22,000 - 18 Railway Avenue E, Marshall

MLS® #A2212374

**\$22,000**

0 Bedroom, 0.00 Bathroom,  
Land on 0.10 Acres

NONE, Marshall, Saskatchewan

It's time to settle down with your own piece of land. Located in the village of Marshall this property is situated for a mobile home. Located just 2 blocks from the school, 1 block from Main Street and just 15 minutes from Lloydminster. Town services include water and a Septic Tank on the property.

## Essential Information

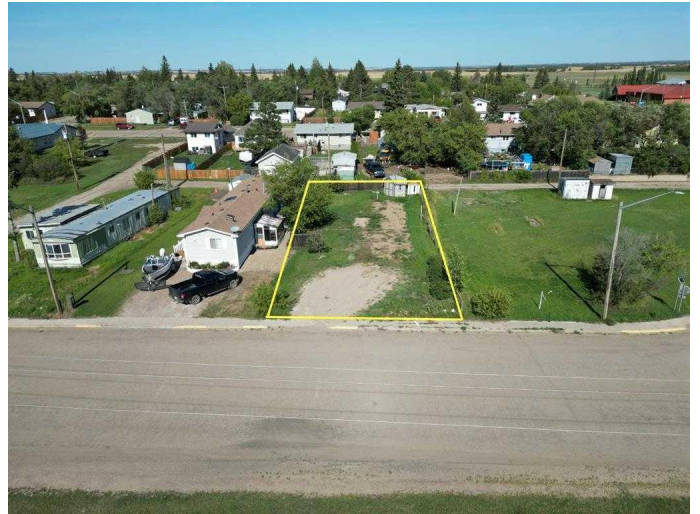
MLS® #	A2212374
Price	\$22,000
Bathrooms	0.00
Acres	0.10
Type	Land
Sub-Type	Residential Land
Status	Active

## Community Information

Address	18 Railway Avenue E
Subdivision	NONE
City	Marshall
County	Saskatchewan
Province	Saskatchewan
Postal Code	S0M1R0

## Additional Information

Date Listed	April 14th, 2025
Days on Market	122
Zoning	R1



**Listing Details**

Listing Office            LPT Realty

Data is supplied by Pillar 9â„¢ MLS® System. Pillar 9â„¢ is the owner of the copyright in its MLS® System. Data is deemed reliable but is not guaranteed accurate by Pillar 9â„¢. The trademarks MLS®, Multiple Listing Service® and the associated logos are owned by The Canadian Real Estate Association (CREA) and identify the quality of services provided by real estate professionals who are members of CREA. Used under license.