

\$480,000 - 1507 Strathcona Close, Strathmore

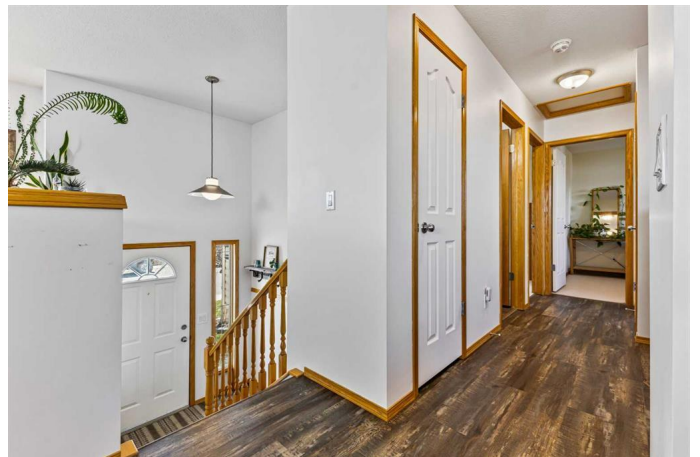
MLS® #A2211795

\$480,000

3 Bedroom, 2.00 Bathroom, 1,046 sqft
Residential on 0.13 Acres

Strathaven, Strathmore, Alberta

Discover the charm of small-town living with all the conveniences you need just steps away. This beautifully updated and meticulously maintained detached home is nestled in a quiet cul-de-sac, offering a bright and airy layout that radiates pride of ownership from the moment you walk in. Featuring 3 bedrooms, 2 full bathrooms, and a fully developed interior, this home is ideal for families seeking comfort, space, and functionality. The open-concept layout is bathed in natural light, creating a warm and welcoming atmosphere throughout. Step outside to your massive yard. There's ample space for RV parking, more garden beds, and even the potential to build an oversized detached garage. Enjoy summer evenings on the spacious two-tier deck, complete with a privacy wall, perfect for entertaining, barbecuing, and relaxing while you watch the sunset. Mature trees add natural beauty, and the peaceful setting is ideal for bird watching and outdoor living. Located just 35 minutes from Calgary's city limits, this home offers the perfect blend of rural tranquility and urban accessibility. You're within walking distance to elementary, junior high, and high schools, as well as the hospital and Strathmore's Stampede Grounds. And for golf lovers, several excellent courses are only minutes away. This is quiet, community-focused living with plenty to do right outside your door. Don't miss your chance to own a slice of



Strathmoreâ€™s charmâ€™book your showing today!

Built in 2003

Essential Information

| | |
|----------------|-------------|
| MLS® # | A2211795 |
| Price | \$480,000 |
| Bedrooms | 3 |
| Bathrooms | 2.00 |
| Full Baths | 2 |
| Square Footage | 1,046 |
| Acres | 0.13 |
| Year Built | 2003 |
| Type | Residential |
| Sub-Type | Detached |
| Style | Bi-Level |
| Status | Active |

Community Information

| | |
|-------------|-----------------------|
| Address | 1507 Strathcona Close |
| Subdivision | Strathaven |
| City | Strathmore |
| County | Wheatland County |
| Province | Alberta |
| Postal Code | T1P 1T2 |

Amenities

| | |
|----------------|--------------------------------|
| Parking Spaces | 4 |
| Parking | Parking Pad, RV Access/Parking |

Interior

| | |
|-------------------|---|
| Interior Features | Kitchen Island, No Animal Home, No Smoking Home |
| Appliances | Dishwasher, Microwave, Range Hood, Refrigerator, Stove(s), Washer/Dryer, Window Coverings |
| Heating | Forced Air |
| Cooling | None |
| Has Basement | Yes |
| Basement | Finished, Full |

Exterior

| | |
|-------------------|--------------------------|
| Exterior Features | Private Yard |
| Lot Description | Back Lane, Lawn, Private |
| Roof | Asphalt Shingle |
| Construction | Vinyl Siding, Wood Frame |
| Foundation | Poured Concrete |

Additional Information

| | |
|----------------|------------------|
| Date Listed | April 17th, 2025 |
| Days on Market | 13 |
| Zoning | R1 |

Listing Details

| | |
|----------------|-------------|
| Listing Office | Real Broker |
|----------------|-------------|

Data is supplied by Pillar 9â„¸ MLS® System. Pillar 9â„¸ is the owner of the copyright in its MLS® System. Data is deemed reliable but is not guaranteed accurate by Pillar 9â„¸. The trademarks MLS®, Multiple Listing Service® and the associated logos are owned by The Canadian Real Estate Association (CREA) and identify the quality of services provided by real estate professionals who are members of CREA. Used under license.