

\$430,000 - 565 Mary Cameron Crescent N, Lethbridge

MLS® #A2209404

\$430,000

4 Bedroom, 2.00 Bathroom, 998 sqft

Residential on 0.10 Acres

Legacy Ridge / Hardieville, Lethbridge, Alberta

Welcome to this stunning 4-bedroom, 2-bathroom home located in the desirable Legacy Ridge community in North Lethbridge! This spacious and well-maintained property offers 2 bedrooms and 1 full bathroom on the upper level, and 2 more bedrooms and 1 full bathroom on the lower level, perfect for families or multi-generational living. Step inside to enjoy the vaulted ceilings in the living room, creating an open, airy feel. The home is equipped with central vacuum system, HVAC, a sump pump and a fire compression system for added safety and peace of mind. Outside, youâ€™ll find a double detached heated garage, complete with a mounted TV perfect for a workshop, gym, or hangout zone. There is extra parking area at the back of the house and more off-street parking at the front. This house is Located near parks, schools, shopping centers and walking trails. The property combines comfort, convenience, and quality. Donâ€™t miss your chance to view this beautiful property in one of Lethbridge desirable neighborhoods! Call your favourite realtor to see the property today.



Built in 2011

Essential Information

MLS® #	A2209404
Price	\$430,000
Bedrooms	4

Bathrooms	2.00
Full Baths	2
Square Footage	998
Acres	0.10
Year Built	2011
Type	Residential
Sub-Type	Detached
Style	Bungalow
Status	Active

Community Information

Address	565 Mary Cameron Crescent
Subdivision	Legacy Ridge / Hardieville
City	Lethbridge
County	Lethbridge
Province	Alberta
Postal Code	T1H 5R4

Amenities

Parking Spaces	3
Parking	Double Garage Attached, Off
# of Garages	2

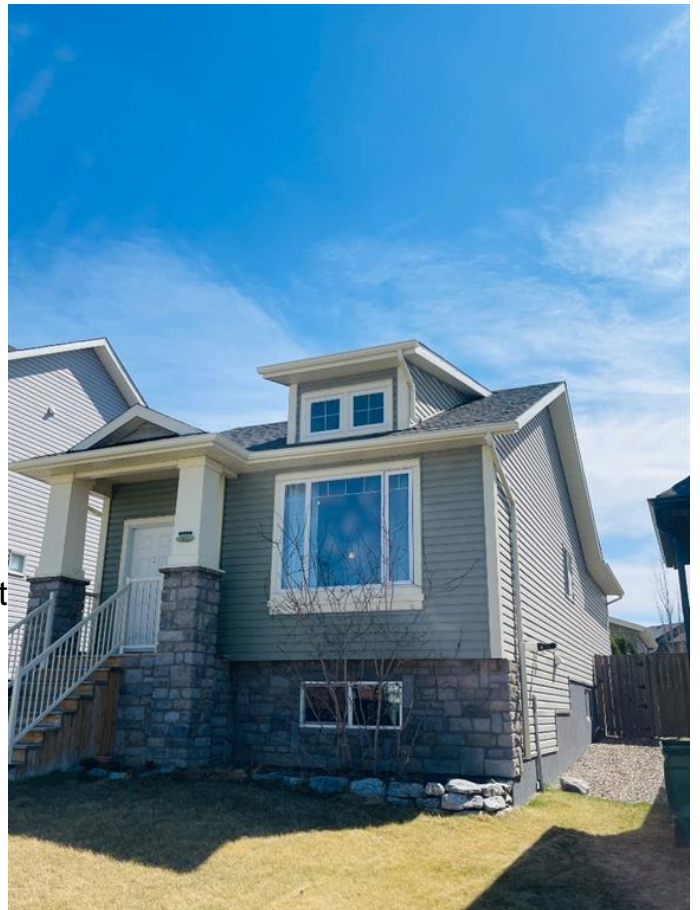
Interior

Interior Features	Breakfast Bar, Ceiling Fan(s), No Smoking Home, V
Appliances	Dishwasher, Microwave, Refr
Heating	Central, Forced Air
Cooling	None
Has Basement	Yes
Basement	Finished, Full

Exterior

Exterior Features	Other
Lot Description	Back Lane, Landscaped
Roof	Asphalt Shingle
Construction	Stone, Vinyl Siding
Foundation	Poured Concrete

Additional Information



Date Listed	April 14th, 2025
Days on Market	72
Zoning	R-SL

Listing Details

Listing Office	CIR REALTY
----------------	------------

Data is supplied by Pillar 9â„¢ MLS® System. Pillar 9â„¢ is the owner of the copyright in its MLS® System. Data is deemed reliable but is not guaranteed accurate by Pillar 9â„¢. The trademarks MLS®, Multiple Listing Service® and the associated logos are owned by The Canadian Real Estate Association (CREA) and identify the quality of services provided by real estate professionals who are members of CREA. Used under license.