

\$4,950,000 - Road 283 A Range, Rural Rocky View County

MLS® #A2198303

\$4,950,000

0 Bedroom, 0.00 Bathroom,
Land on 92.48 Acres

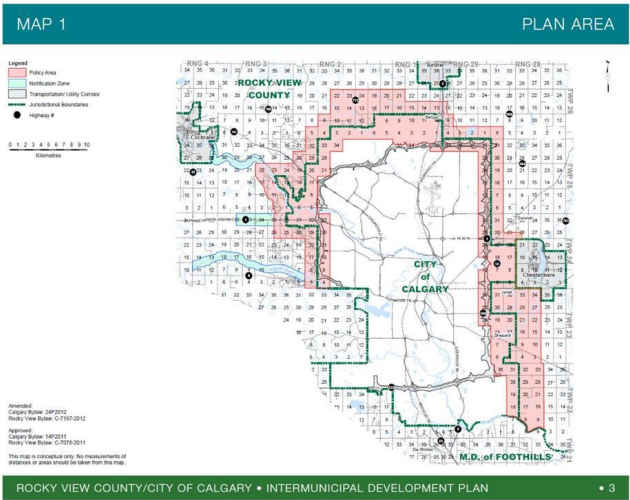
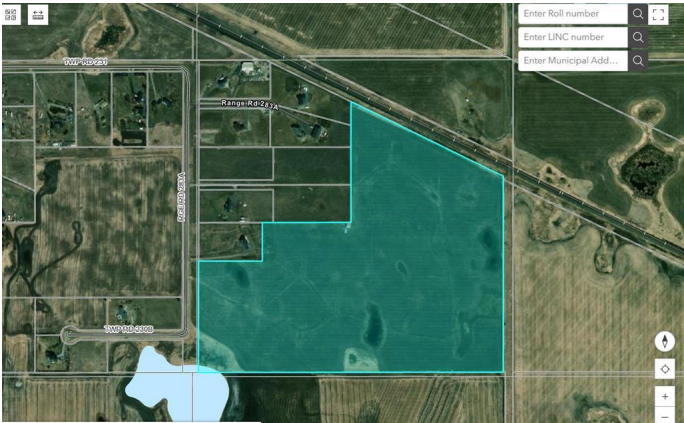
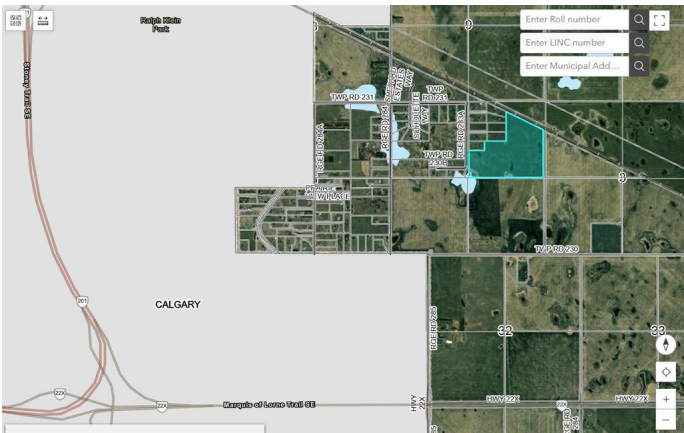
NONE, Rural Rocky View County, Alberta

Opportunity Knocks At Your Door!! Attention all investors and developers, we are pleased to bring you a 92.48 acre land parcel with an unbeatable location for near future growth. The recent PRAIRIE ECONOMIC GATEWAY AGREEMENT between the City of Calgary and Rockyview County brings an incredible number of opportunities to this area. This parcel lies right next to the approved plan area. As well, HOTCHKISS, one of Calgary’s newest communities, is only a couple of minutes away. A road allowance at the east edge of the property will then make access to 146 Ave even easier* (subject to Rockyview County approval). This property is a golden opportunity which is right next to city limits and developments at the cost of only \$53525.00 Per Acre. Call before you miss this chance!!

Essential Information

| | |
|-----------|------------------|
| MLS® # | A2198303 |
| Price | \$4,950,000 |
| Bathrooms | 0.00 |
| Acres | 92.48 |
| Type | Land |
| Sub-Type | Residential Land |
| Status | Active |

Community Information



| | |
|-------------|-------------------------|
| Address | Road 283 A Range |
| Subdivision | NONE |
| City | Rural Rocky View County |
| County | Rocky View County |
| Province | Alberta |
| Postal Code | T1X0G9 |

Additional Information

| | |
|----------------|-----------------|
| Date Listed | March 2nd, 2025 |
| Days on Market | 107 |
| Zoning | A-GEN |

Listing Details

| | |
|----------------|------------|
| Listing Office | CIR Realty |
|----------------|------------|

Data is supplied by Pillar 9â„¢ MLS® System. Pillar 9â„¢ is the owner of the copyright in its MLS® System. Data is deemed reliable but is not guaranteed accurate by Pillar 9â„¢. The trademarks MLS®, Multiple Listing Service® and the associated logos are owned by The Canadian Real Estate Association (CREA) and identify the quality of services provided by real estate professionals who are members of CREA. Used under license.