

# \$750,000 - 24016 Aspen Drive, Rural Rocky View County

MLS® #A2190979

**\$750,000**

0 Bedroom, 0.00 Bathroom,  
Land on 3.95 Acres

NONE, Rural Rocky View County, Alberta

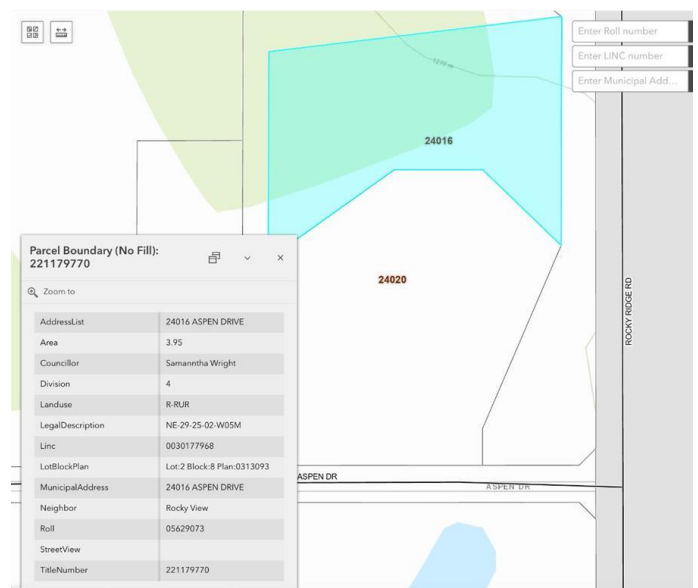
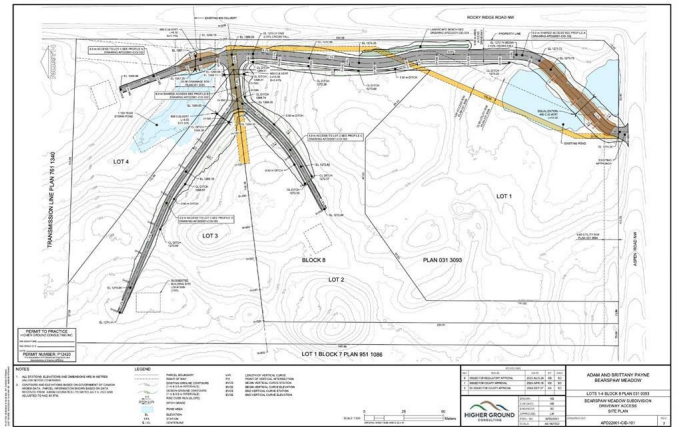
LOT 2 is the lot that is being offered for sale. Take advantage of one the very few 4 acre lots available in Bearspaw, just steps from the City Limits. This private lot is FULLY SERVICED, treed and is BEAUTIFUL. Easy access to everything. Shopping, YMCA, everything you'd need. No architectural controls in place. Build what you want, when you want. Don't wait too long, this opportunity will not last. The main road in will be paved once the construction has been completed on the homes. Call with any question!

## Essential Information

|           |                  |
|-----------|------------------|
| MLS® #    | A2190979         |
| Price     | \$750,000        |
| Bathrooms | 0.00             |
| Acres     | 3.95             |
| Type      | Land             |
| Sub-Type  | Residential Land |
| Status    | Active           |

## Community Information

|             |                         |
|-------------|-------------------------|
| Address     | 24016 Aspen Drive       |
| Subdivision | NONE                    |
| City        | Rural Rocky View County |
| County      | Rocky View County       |
| Province    | Alberta                 |
| Postal Code | T3R 1A5                 |



**Amenities**

Utilities                      Electricity at Lot Line, Water At Lot Line, Natural Gas at Lot Line

**Additional Information**

Date Listed                      January 29th, 2025  
Days on Market                99  
Zoning                              R-RUR

**Listing Details**

Listing Office                      RE/MAX Real Estate (Central)

Data is supplied by Pillar 9â„¢ MLS® System. Pillar 9â„¢ is the owner of the copyright in its MLS® System. Data is deemed reliable but is not guaranteed accurate by Pillar 9â„¢. The trademarks MLS®, Multiple Listing Service® and the associated logos are owned by The Canadian Real Estate Association (CREA) and identify the quality of services provided by real estate professionals who are members of CREA. Used under license.