

# \$72,000 - 238 3 Avenue, Lomond

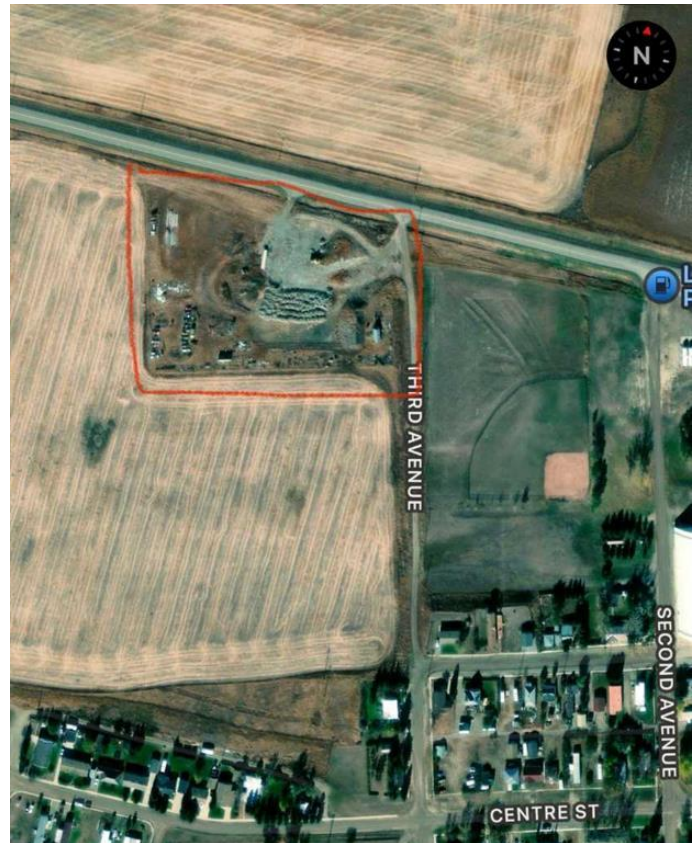
MLS® #A2189832

**\$72,000**

0 Bedroom, 0.00 Bathroom,  
Land on 4.90 Acres

NONE, Lomond, Alberta

Embrace the charm of small town living with this exclusive opportunity located in the outskirts of Lomond. This 4.9 acre vacant lot awaits your vision to build your dream home. Lomond offers a lifestyle with stunning natural beauty including the nearby Little Bow Provincial Park and McGregor Lake. The close-knit community fosters a sense of belonging where the slower pace of life allows for a peaceful living experience. Residents enjoy the convenience of essential services including a kindergarten to grade 12 school, a library, a newly built rink, a grocery and hardware store, as well as a restaurant that's been recently renovated. A broader range of amenities nearby towns or cities may be accessed such as a hospital in Vulcan approximately 30 minutes away and everything else offered in the City of Lethbridge only 1 hour away. It's important to note that the appeal of living in Lomond often lies in its simplicity and the opportunity to experience a more tranquil life. Seize this chance to create your haven in Lomond. Call your favorite REALTOR® today for more information!



## Essential Information

|           |          |
|-----------|----------|
| MLS® #    | A2189832 |
| Price     | \$72,000 |
| Bathrooms | 0.00     |

|          |                  |
|----------|------------------|
| Acres    | 4.90             |
| Type     | Land             |
| Sub-Type | Residential Land |
| Status   | Active           |

### **Community Information**

|             |               |
|-------------|---------------|
| Address     | 238 3 Avenue  |
| Subdivision | NONE          |
| City        | Lomond        |
| County      | Vulcan County |
| Province    | Alberta       |
| Postal Code | T0L 1G0       |

### **Additional Information**

|                |                    |
|----------------|--------------------|
| Date Listed    | January 24th, 2025 |
| Days on Market | 109                |
| Zoning         | Commercial         |

### **Listing Details**

|                |                                 |
|----------------|---------------------------------|
| Listing Office | RE/MAX REAL ESTATE - LETHBRIDGE |
|----------------|---------------------------------|

Data is supplied by Pillar 9â„¢ MLS® System. Pillar 9â„¢ is the owner of the copyright in its MLS® System. Data is deemed reliable but is not guaranteed accurate by Pillar 9â„¢. The trademarks MLS®, Multiple Listing Service® and the associated logos are owned by The Canadian Real Estate Association (CREA) and identify the quality of services provided by real estate professionals who are members of CREA. Used under license.