

# \$70,000 - 106, 15249 Twp Rd 665a Township, Lac La Biche County

---

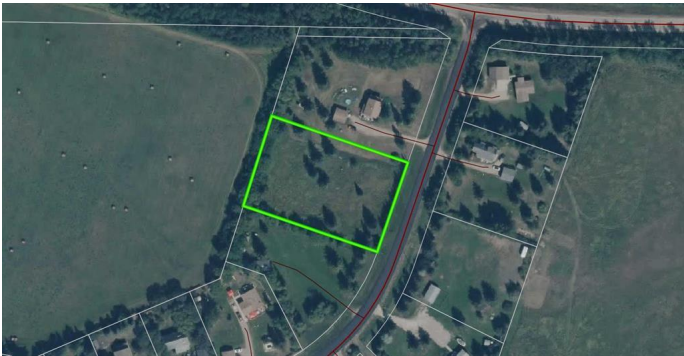
MLS® #A2186829

**\$70,000**

0 Bedroom, 0.00 Bathroom,  
Land on 1.35 Acres

Missawawi Lake Estate, Lac La Biche County,  
Alberta

This 1.35-acre parcel of vacant land is nestled in a peaceful, quiet setting just on the outskirts of Lac La Biche. Having a level structure and being located near multiple lakes, this property offers the perfect canvas to build your dream cabin or house. Surrounded by mature trees, including large spruce trees, this lot ensures privacy and a natural retreat-like ambiance. This lot also has power available providing easy access for future connections. Whether you envision a weekend getaway or a permanent residence, this property provides an opportunity to create an atmosphere you desire in a truly desirable location.



## Essential Information

|           |                  |
|-----------|------------------|
| MLS® #    | A2186829         |
| Price     | \$70,000         |
| Bathrooms | 0.00             |
| Acres     | 1.35             |
| Type      | Land             |
| Sub-Type  | Residential Land |
| Status    | Active           |

## Community Information

|             |                                 |
|-------------|---------------------------------|
| Address     | 106, 15249 Twp Rd 665a Township |
| Subdivision | Missawawi Lake Estate           |
| City        | Lac La Biche County             |

|             |                     |
|-------------|---------------------|
| County      | Lac La Biche County |
| Province    | Alberta             |
| Postal Code | T0A2C2              |

### **Amenities**

|           |                       |
|-----------|-----------------------|
| Utilities | Natural Gas Available |
|-----------|-----------------------|

### **Exterior**

|                 |                                    |
|-----------------|------------------------------------|
| Lot Description | Cleared, Few Trees, Level, Private |
|-----------------|------------------------------------|

### **Additional Information**

|                |                     |
|----------------|---------------------|
| Date Listed    | January 10th, 2025  |
| Days on Market | 216                 |
| Zoning         | COUNTRY RESIDENTIAL |

### **Listing Details**

|                |                        |
|----------------|------------------------|
| Listing Office | RE/MAX LA BICHE REALTY |
|----------------|------------------------|

Data is supplied by Pillar 9â„¢ MLS® System. Pillar 9â„¢ is the owner of the copyright in its MLS® System. Data is deemed reliable but is not guaranteed accurate by Pillar 9â„¢. The trademarks MLS®, Multiple Listing Service® and the associated logos are owned by The Canadian Real Estate Association (CREA) and identify the quality of services provided by real estate professionals who are members of CREA. Used under license.